

PlotUtil r1.06 by Thomas vom Braucke, D-Bielefeld

erzeugt am: 22.5.1994

erzeugt um: 13:25:37

Script: standard.scr

ANSIB18.BEM	DIN472.BEM	DIN7500D.BEM	DIN931.BEM	SBG.BEM
ARB.BEM	DIN479.BEM	DIN7500M.BEM	DIN933.BEM	SBS.BEM
BEF.BEM	DIN525.BEM	DIN7500N.BEM	DIN935.BEM	SBW.BEM
BES.BEM	DIN529.BEM	DIN7504.BEM	DIN936.BEM	SCHHS.BEM
BN1918.BEM	DIN546.BEM	DIN7504K.BEM	DIN937.BEM	SCHNORRS.BEM
DIN11014.BEM	DIN547.BEM	DIN7504N.BEM	DIN938.BEM	SD3.BEM
DIN1142.BEM	DIN548.BEM	DIN7504P.BEM	DIN93.BEM	SPERRW.BEM
DIN1151.BEM	DIN551.BEM	DIN7513A.BEM	DIN94.BEM	SWIFTPS.BEM
DIN1152.BEM	DIN553.BEM	DIN7513B.BEM	DIN95.BEM	TAPC8.BEM
DIN125.BEM	DIN555.BEM	DIN7513F.BEM	DIN963.BEM	TAPC9.BEM
DIN127.BEM	DIN557.BEM	DIN7513G.BEM	DIN964.BEM	TAPH.BEM
DIN128.BEM	DIN561.BEM	DIN7516A.BEM	DIN965.BEM	TAPK.BEM
DIN137A.BEM	DIN562.BEM	DIN7516D.BEM	DIN966.BEM	TAPP.BEM
DIN137B.BEM	DIN564.BEM	DIN7516E.BEM	DIN967.BEM	TAPT.BEM
DIN1469.BEM	DIN571.BEM	DIN7604.BEM	DIN96.BEM	TDA.BEM
DIN1470.BEM	DIN580.BEM	DIN7967.BEM	DIN975.BEM	TDA-T.BEM
DIN1471.BEM	DIN582.BEM	DIN7968.BEM	DIN976A.BEM	TDB-T.BEM
DIN1472.BEM	DIN601.BEM	DIN7969.BEM	DIN976B.BEM	THERMAG.BEM
DIN1473.BEM	DIN603.BEM	DIN7971.BEM	DIN97.BEM	TUFLOK.BEM
DIN1474.BEM	DIN604.BEM	DIN7972.BEM	DIN980.BEM	VSK.BEM
DIN1475.BEM	DIN605.BEM	DIN7973.BEM	DIN986.BEM	W151.BEM
DIN1476.BEM	DIN605MU.BEM	DIN7976.BEM	DISRU.BEM	W158.BEM
DIN1477.BEM	DIN607.BEM	DIN7977.BEM	DISSE.BEM	W193.BEM
DIN1478.BEM	DIN608.BEM	DIN7978.BEM	E17405P.BEM	W196.BEM
DIN1479.BEM	DIN609.BEM	DIN7979C.BEM	E17504K.BEM	
DIN1480A.BEM	DIN6319C.BEM	DIN7979D.BEM	E17504N.BEM	
DIN1480O.BEM	DIN6319D.BEM	DIN7980.BEM	EIN7504C.BEM	
DIN1481.BEM	DIN6325.BEM	DIN7981.BEM	EINFLU.BEM	
DIN1587.BEM	DIN6330.BEM	DIN7982.BEM	EINPR.BEM	
DIN1804.BEM	DIN6331.BEM	DIN7983.BEM	EITAC.BEM	
DIN1816.BEM	DIN653.BEM	DIN7984.BEM	EITAK.BEM	
DIN186A.BEM	DIN660.BEM	DIN7985.BEM	EITAP.BEM	
DIN188.BEM	DIN661.BEM	DIN7989.BEM	ENSAT302.BEM	
DIN1.BEM	DIN6796.BEM	DIN7990.BEM	ENSAT307.BEM	
DIN2093.BEM	DIN6797A.BEM	DIN7991.BEM	FEDERD.BEM	
DIN2509.BEM	DIN6797J.BEM	DIN7993A.BEM	FEDERE.BEM	
DIN2510B.BEM	DIN6797V.BEM	DIN7993B.BEM	FLUTEK.BEM	
DIN2510M.BEM	DIN6798A.BEM	DIN7995.BEM	HECOLINS.BEM	
DIN25195.BEM	DIN6798J.BEM	DIN7996.BEM	HECOLITO.BEM	
DIN258.BEM	DIN6798V.BEM	DIN7997.BEM	HECOPAN.BEM	
DIN315.BEM	DIN6799.BEM	DIN7999.BEM	HECOPTO.BEM	
DIN316.BEM	DIN6885.BEM	DIN7.BEM	HECOSENK.BEM	
DIN417.BEM	DIN6911.BEM	DIN84.BEM	HECOSG.BEM	
DIN432.BEM	DIN6912.BEM	DIN85.BEM	HECOSTOR.BEM	
DIN433.BEM	DIN6916.BEM	DIN9021.BEM	ISO4017.BEM	
DIN434.BEM	DIN6917.BEM	DIN906.BEM	ISO7380.BEM	
DIN435.BEM	DIN6918.BEM	DIN908.BEM	KLAP.BEM	
DIN436.BEM	DIN6921.BEM	DIN910.BEM	MFK109.BEM	
DIN438.BEM	DIN6923.BEM	DIN911.BEM	MLF109.BEM	
DIN440.BEM	DIN6926.BEM	DIN912.BEM	MLS109.BEM	
DIN440R.BEM	DIN705.BEM	DIN913.BEM	NYLTITE.BEM	
DIN440V.BEM	DIN7337A.BEM	DIN914.BEM	PLASTFH.BEM	
DIN444.BEM	DIN7337B.BEM	DIN915.BEM	PLASTFZ8.BEM	
DIN463.BEM	DIN7338B.BEM	DIN916.BEM	PLASTFZ.BEM	
DIN464.BEM	DIN7338C.BEM	DIN917.BEM	POLYLI.BEM	
DIN466.BEM	DIN7343.BEM	DIN921.BEM	POLYLS.BEM	
DIN467.BEM	DIN7500A.BEM	DIN923.BEM	POLYSE.BEM	
DIN4712.BEM	DIN7500B.BEM	DIN928.BEM	RIPP.BEM	
DIN471.BEM	DIN7500C.BEM	DIN929.BEM	SANTECH.BEM	

Differenzen in den Linienstaerken der dargestellten EPS-Dateien entstehen rundungsbedingt durch die nur 300dpi Aufloesung des Laserdruckers (Filme haben i.d.R. mehr als 2400dpi).

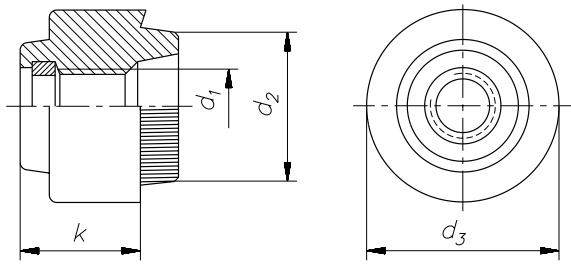
eingebunde Dateien: 23518127 Byte

260 Dateien

BoundingBox-Breite: 100.00 mm

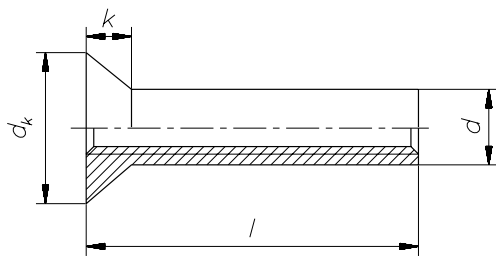
Anzeige der EPS-Grenzen: Schnittmarken

erzeugte PostScript-Datei: pltproof.ps



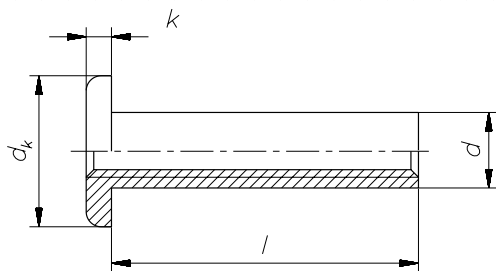
BN1918.BEM 56435 Byte

BBox: 20.0,20.0 828.0,344.0 Skalierung: 0.35



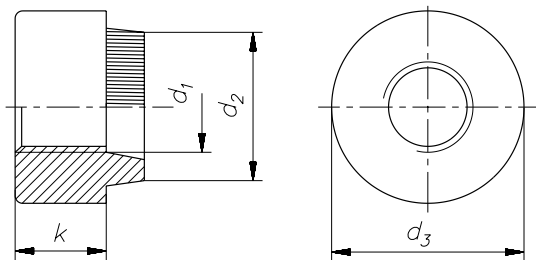
BES.BEM 50334 Byte

BBox: 20.0,20.0 828.0,344.0 Skalierung: 0.35



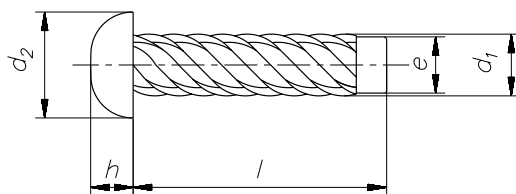
BEF.BEM 52360 Byte

BBox: 20.0,20.0 828.0,344.0 Skalierung: 0.35



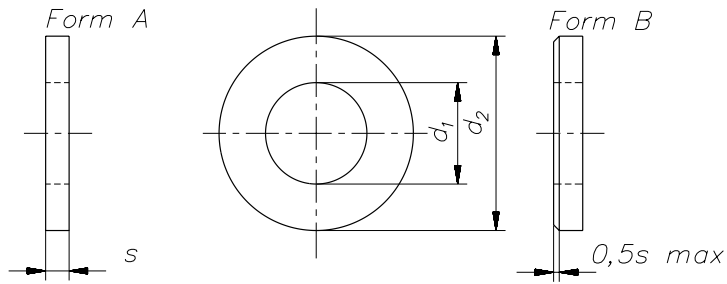
ARB.BEM 50345 Byte

BBox: 20.0,20.0 828.0,344.0 Skalierung: 0.35



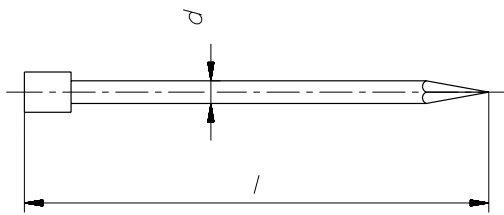
ANSIB18.BEM 74848 Byte

BBox: 20.0,20.0 828.0,344.0 Skalierung: 0.35



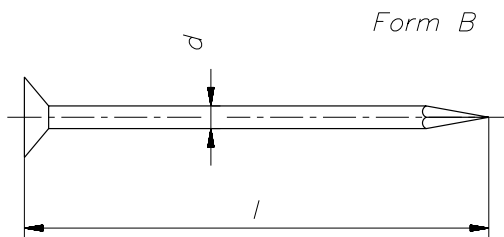
DIN125.BEM 57323 Byte

BBox: 20.0,20.0 828.0,344.0 Skalierung: 0.35



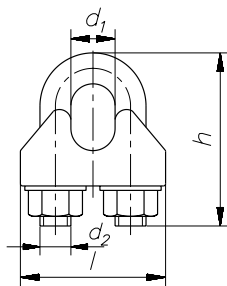
DIN1152.BEM 26700 Byte

BBox: 20.0,20.0 828.0,344.0 Skalierung: 0.35



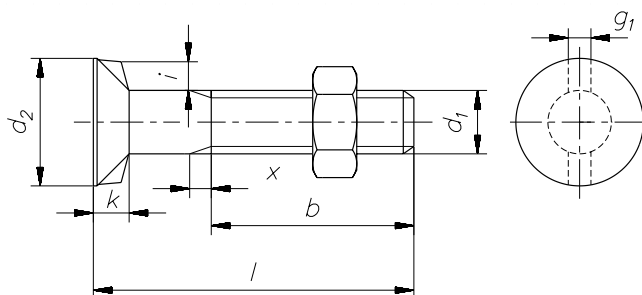
DIN1151.BEM 27525 Byte

BBox: 20.0,20.0 828.0,344.0 Skalierung: 0.35



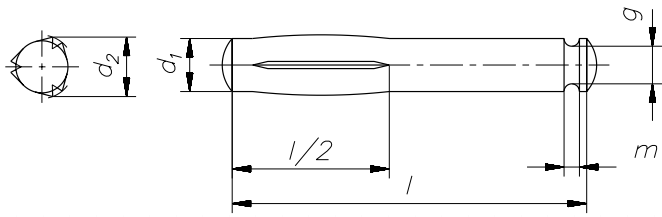
DIN1142.BEM 56039 Byte

BBox: 20.0,20.0 828.0,344.0 Skalierung: 0.35



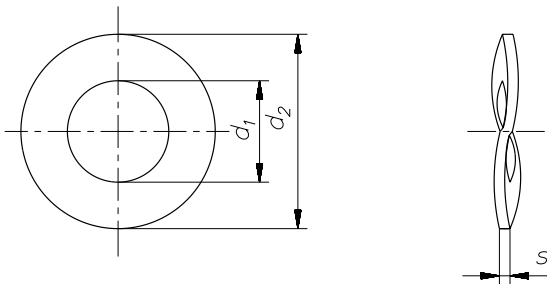
DIN11014.BEM 104532 Byte

BBox: 20.0,20.0 828.0,344.0 Skalierung: 0.35



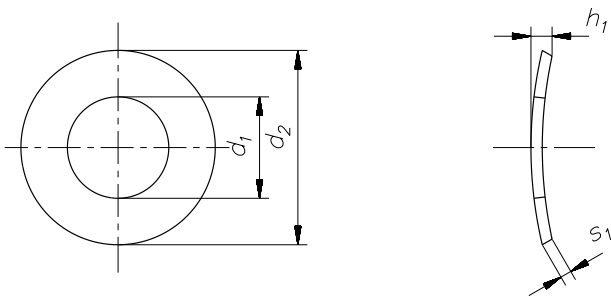
DIN1469.BEM 79094 Byte

BBox: 20.0,20.0 828.0,344.0 Skalierung: 0.35



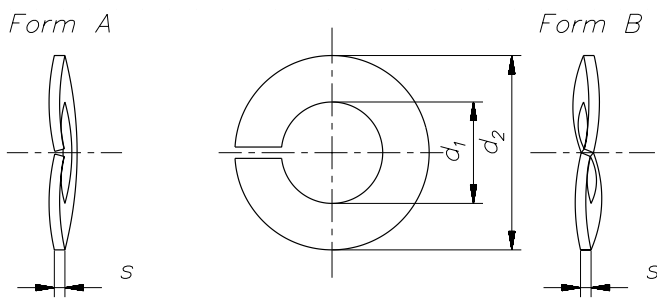
DIN137B.BEM 45972 Byte

BBox: 20.0,20.0 828.0,344.0 Skalierung: 0.35



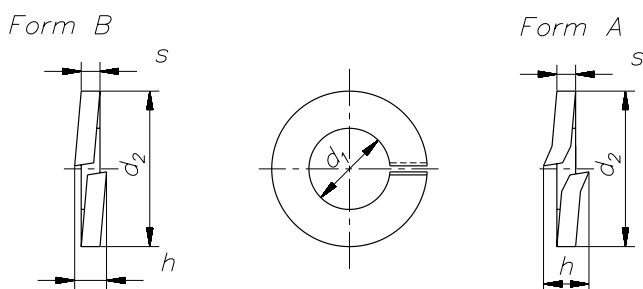
DIN137A.BEM 68831 Byte

BBox: 20.0,20.0 828.0,344.0 Skalierung: 0.35



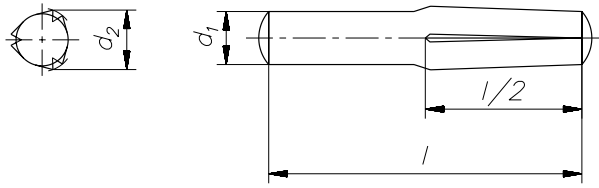
DIN128.BEM 61518 Byte

BBox: 20.0,20.0 828.0,344.0 Skalierung: 0.35



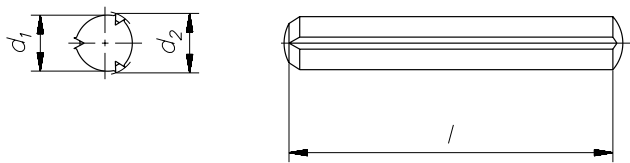
DIN127.BEM 109819 Byte

BBox: 20.0,20.0 828.0,344.0 Skalierung: 0.35



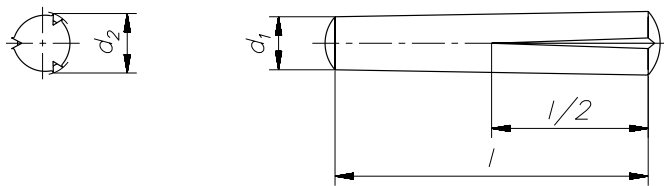
DIN1474.BEM 53190 Byte

BBox: 20.0,20.0 828.0,344.0 Skalierung: 0.35



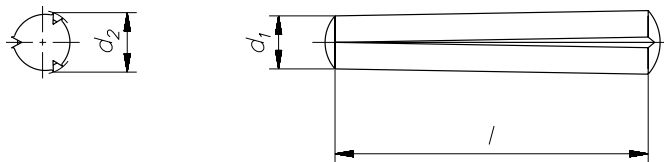
DIN1473.BEM 40677 Byte

BBox: 20.0,20.0 828.0,344.0 Skalierung: 0.35



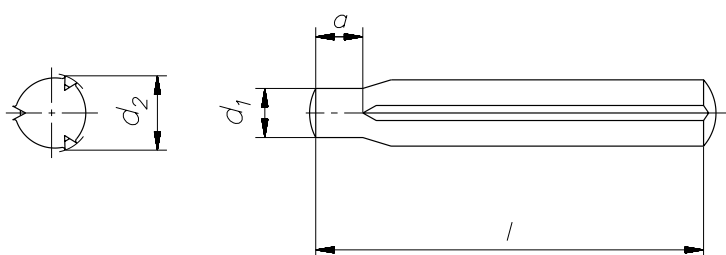
DIN1472.BEM 53583 Byte

BBox: 20.0,20.0 828.0,344.0 Skalierung: 0.35



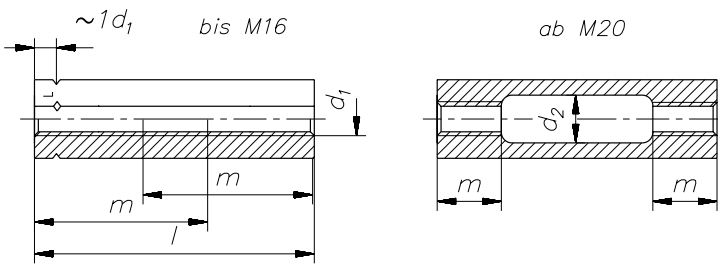
DIN1471.BEM 41702 Byte

BBox: 20.0,20.0 828.0,344.0 Skalierung: 0.35



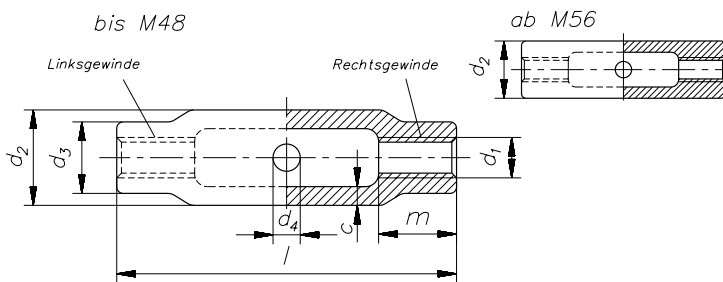
DIN1470.BEM 53762 Byte

BBox: 20.0,20.0 828.0,344.0 Skalierung: 0.35



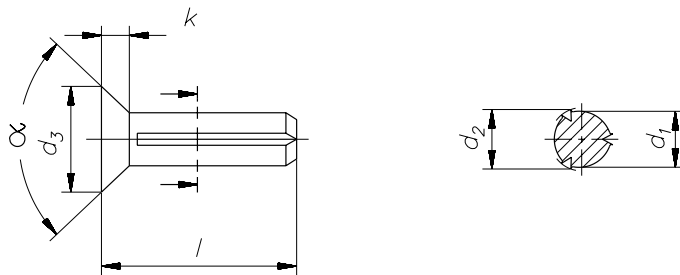
DIN1479.BEM 99376 Byte

BBox: 20.0,20.0 828.0,344.0 Skalierung: 0.35



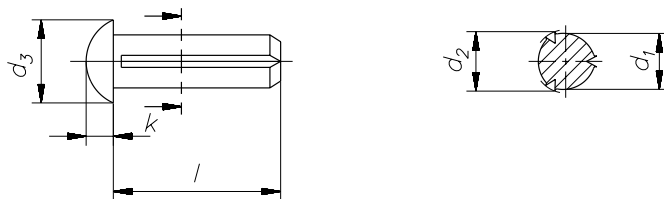
DIN1478.BEM 117611 Byte

BBox: 20.0,20.0 828.0,344.0 Skalierung: 0.35



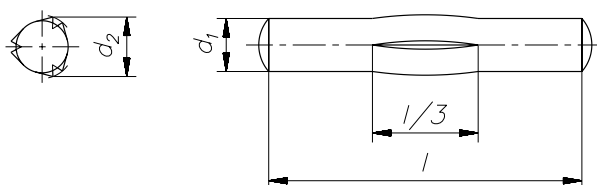
DIN1477.BEM 103410 Byte

BBox: 20.0,20.0 828.0,344.0 Skalierung: 0.35



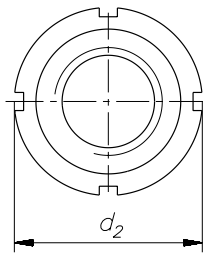
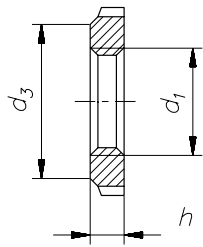
DIN1476.BEM 76287 Byte

BBox: 20.0,20.0 828.0,344.0 Skalierung: 0.35



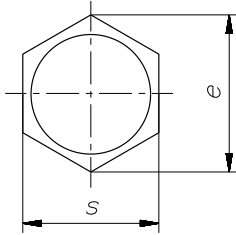
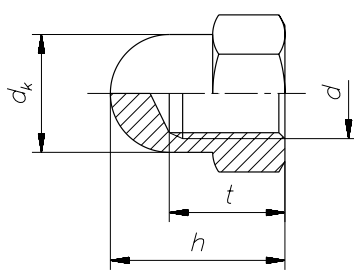
DIN1475.BEM 54203 Byte

BBox: 20.0,20.0 828.0,344.0 Skalierung: 0.35



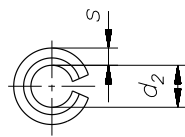
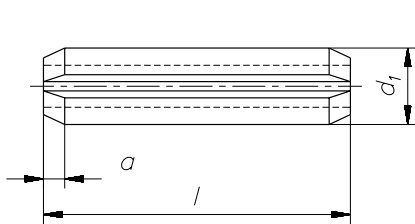
DIN1804.BEM 58571 Byte

BBox: 20.0,20.0 828.0,344.0 Skalierung: 0.35



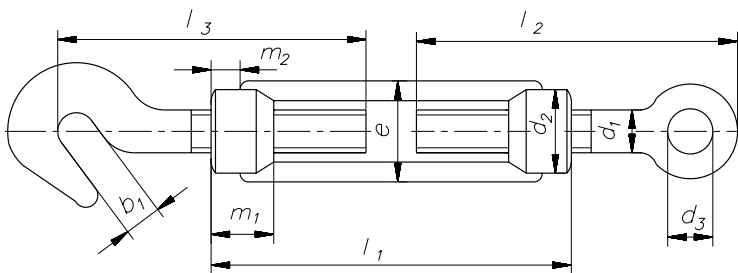
DIN1587.BEM 73965 Byte

BBox: 20.0,20.0 828.0,344.0 Skalierung: 0.35



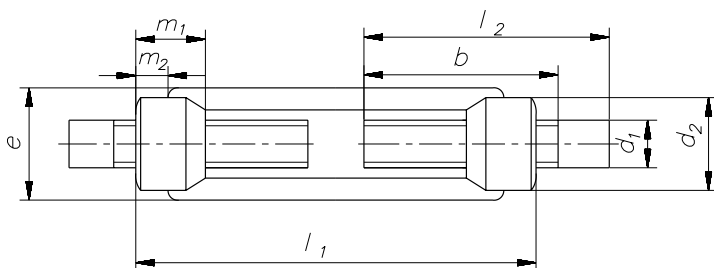
DIN1481.BEM 68088 Byte

BBox: 20.0,20.0 828.0,344.0 Skalierung: 0.35



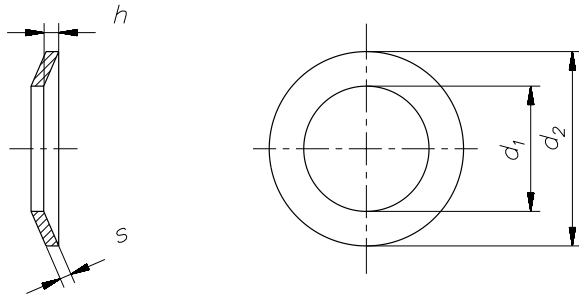
DIN1480O.BEM 145415 Byte

BBox: 20.0,20.0 828.0,344.0 Skalierung: 0.35



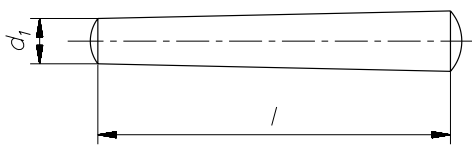
DIN1480A.BEM 102353 Byte

BBox: 20.0,20.0 828.0,344.0 Skalierung: 0.35



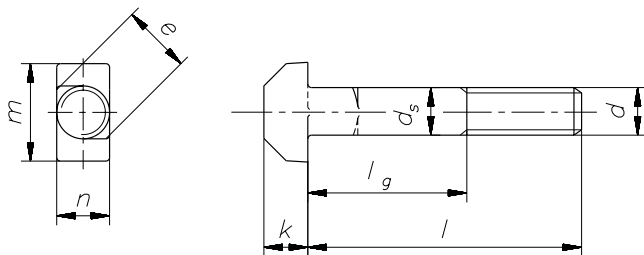
DIN2093.BEM 62171 Byte

BBox: 20.0,20.0 828.0,344.0 Skalierung: 0.35



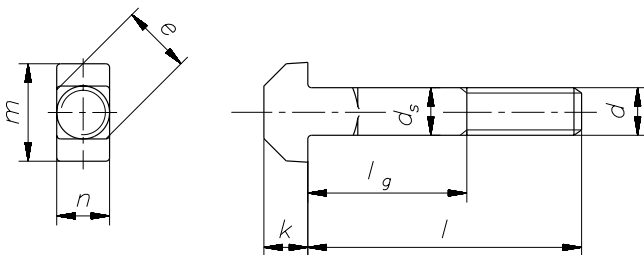
DIN1.BEM 25750 Byte

BBox: 20.0,20.0 828.0,344.0 Skalierung: 0.35



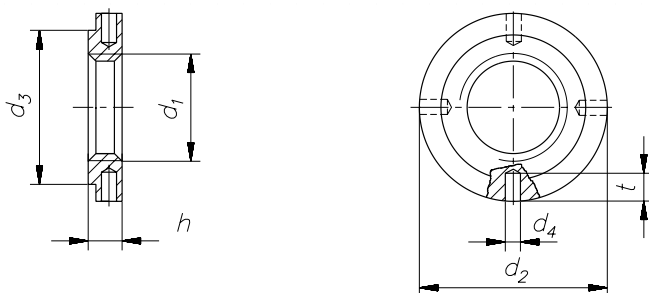
DIN188.BEM 119833 Byte

BBox: 20.0,20.0 828.0,344.0 Skalierung: 0.35



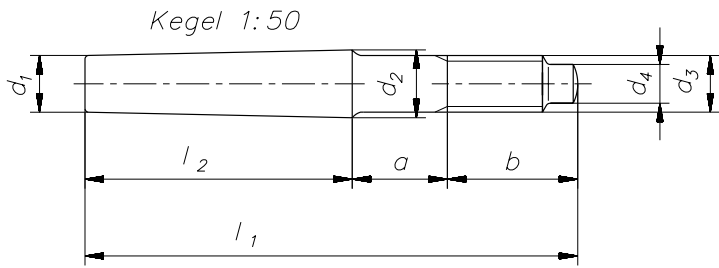
DIN186A.BEM 119643 Byte

BBox: 20.0,20.0 828.0,344.0 Skalierung: 0.35



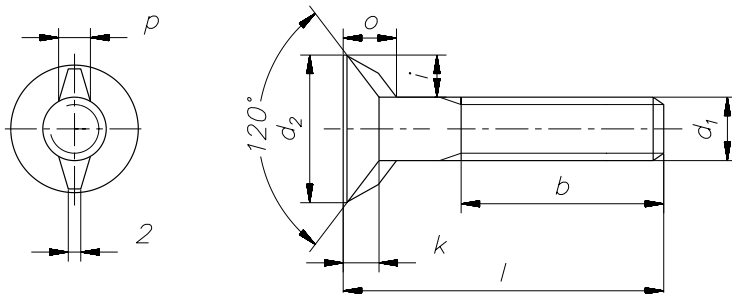
DIN1816.BEM 87227 Byte

BBox: 20.0,20.0 828.0,344.0 Skalierung: 0.35



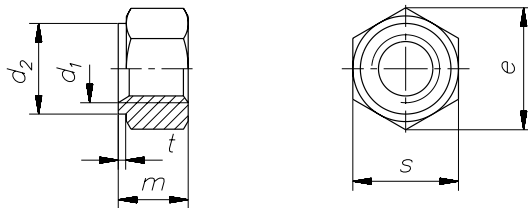
DIN258.BEM 102942 Byte

BBox: 20.0,20.0 828.0,344.0 Skalierung: 0.35



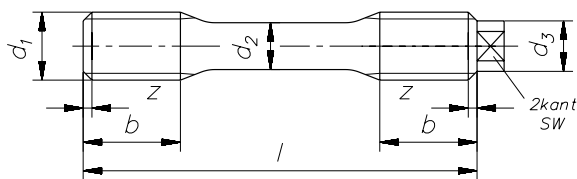
DIN25195.BEM 146230 Byte

BBox: 20.0,20.0 828.0,344.0 Skalierung: 0.35



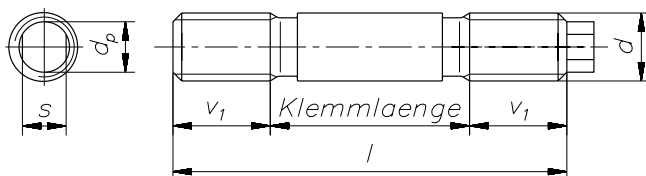
DIN2510M.BEM 75700 Byte

BBox: 20.0,20.0 828.0,344.0 Skalierung: 0.35



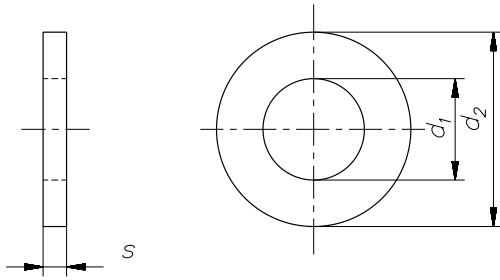
DIN2510B.BEM 102220 Byte

BBox: 20.0,20.0 828.0,344.0 Skalierung: 0.35



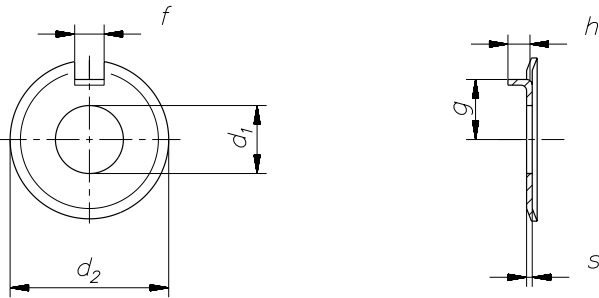
DIN2509.BEM 93683 Byte

BBox: 20.0,20.0 828.0,344.0 Skalierung: 0.35



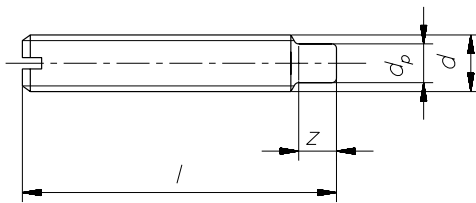
DIN433.BEM 42374 Byte

BBox: 20.0,20.0 828.0,344.0 Skalierung: 0.35



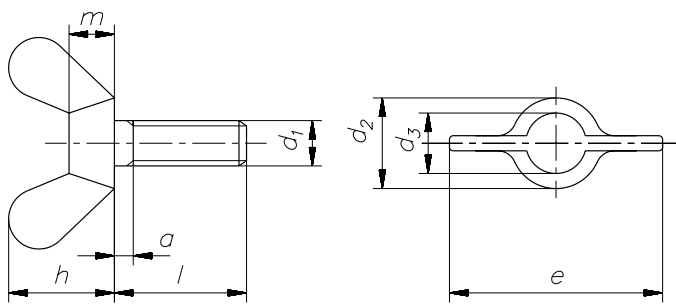
DIN432.BEM 80359 Byte

BBox: 20.0,20.0 828.0,344.0 Skalierung: 0.35



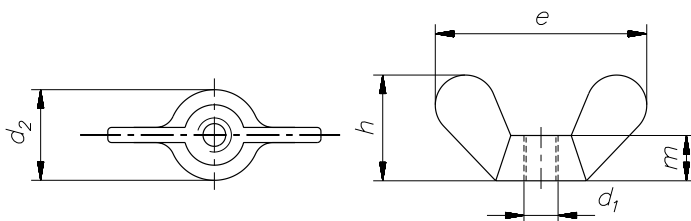
DIN417.BEM 51320 Byte

BBox: 20.0,20.0 828.0,344.0 Skalierung: 0.35



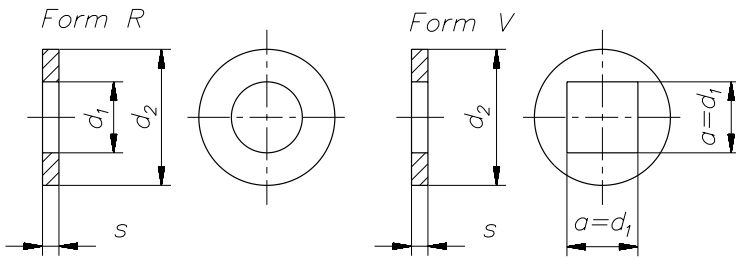
DIN316.BEM 103651 Byte

BBox: 20.0,20.0 828.0,344.0 Skalierung: 0.35



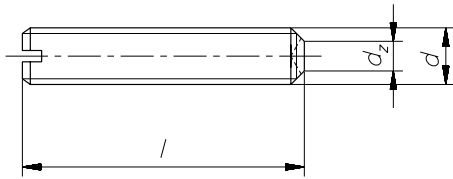
DIN315.BEM 72107 Byte

BBox: 20.0,20.0 828.0,344.0 Skalierung: 0.35



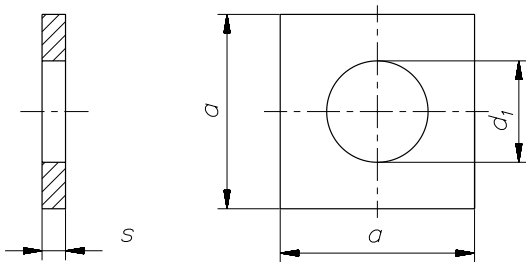
DIN440.BEM 96285 Byte

BBox: 20.0,20.0 828.0,344.0 Skalierung: 0.35



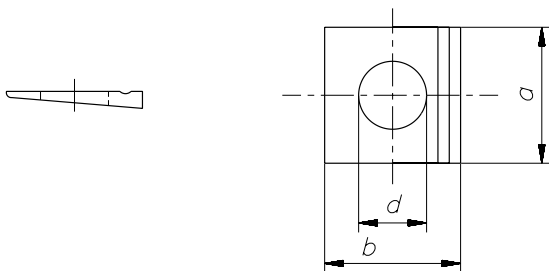
DIN438.BEM 39163 Byte

BBox: 20.0,20.0 828.0,344.0 Skalierung: 0.35



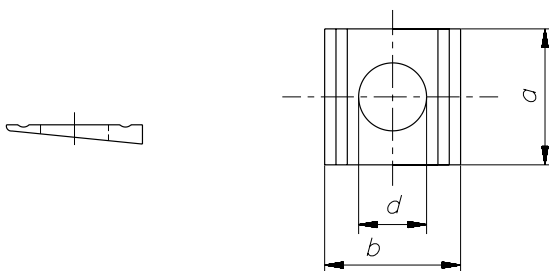
DIN436.BEM 51736 Byte

BBox: 20.0,20.0 828.0,344.0 Skalierung: 0.35



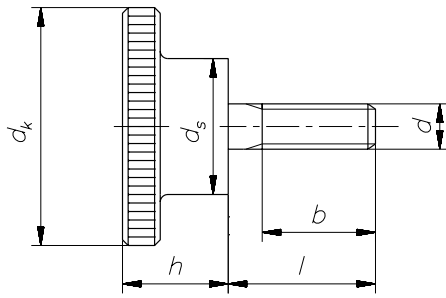
DIN435.BEM 40785 Byte

BBox: 20.0,20.0 828.0,344.0 Skalierung: 0.35



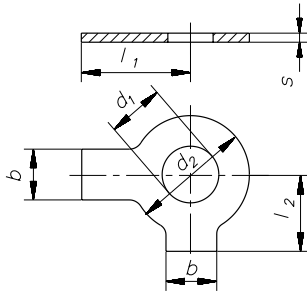
DIN434.BEM 41045 Byte

BBox: 20.0,20.0 828.0,344.0 Skalierung: 0.35



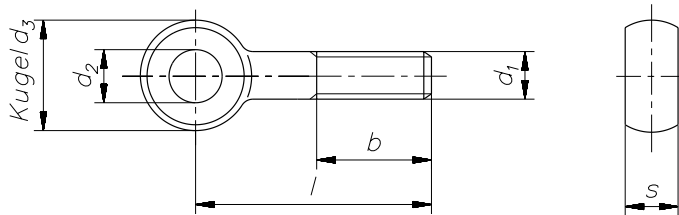
DIN464.BEM 78723 Byte

BBox: 20.0,20.0 828.0,344.0 Skalierung: 0.35



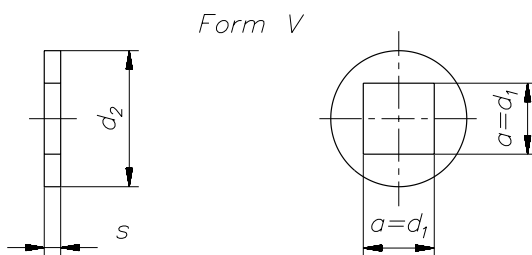
DIN463.BEM 122651 Byte

BBox: 20.0,20.0 828.0,344.0 Skalierung: 0.35



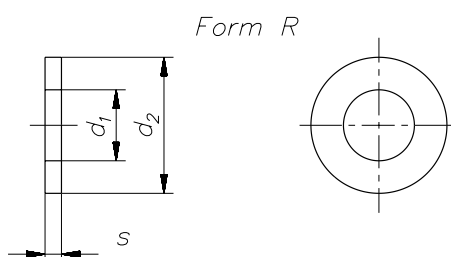
DIN444.BEM 80803 Byte

BBox: 20.0,20.0 828.0,344.0 Skalierung: 0.35



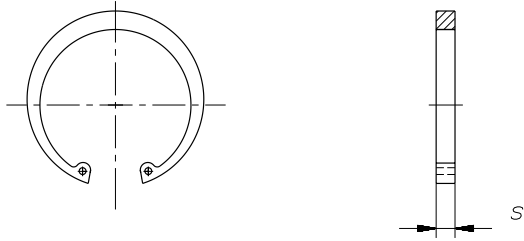
DIN440V.BEM 54800 Byte

BBox: 20.0,20.0 828.0,344.0 Skalierung: 0.35



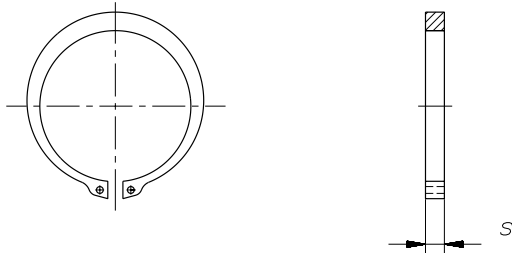
DIN440R.BEM 42093 Byte

BBox: 20.0,20.0 828.0,344.0 Skalierung: 0.35



DIN472.BEM 20141 Byte

BBox: 20.0,20.0 828.0,344.0 Skalierung: 0.35

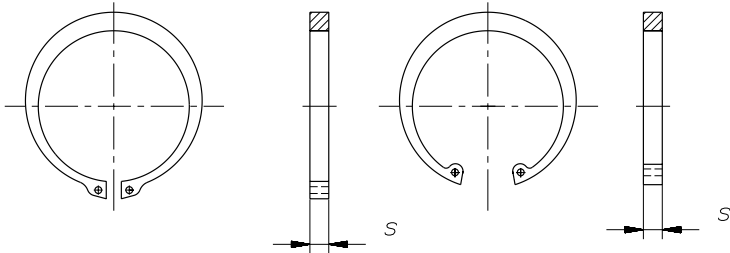


DIN471.BEM 19328 Byte

BBox: 20.0,20.0 828.0,344.0 Skalierung: 0.35

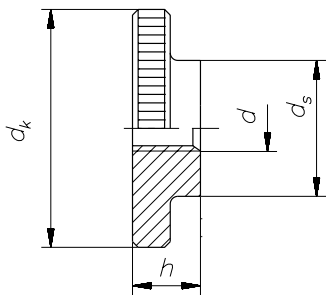
für Wellen

für Bohrungen



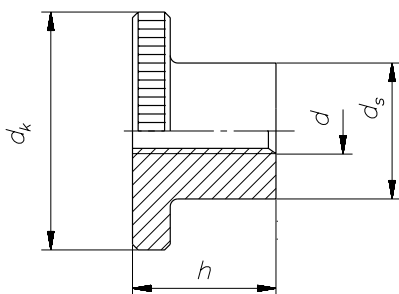
DIN4712.BEM 41890 Byte

BBox: 20.0,20.0 828.0,344.0 Skalierung: 0.35



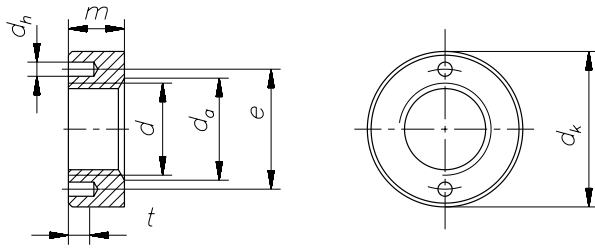
DIN467.BEM 46796 Byte

BBox: 20.0,20.0 828.0,344.0 Skalierung: 0.35



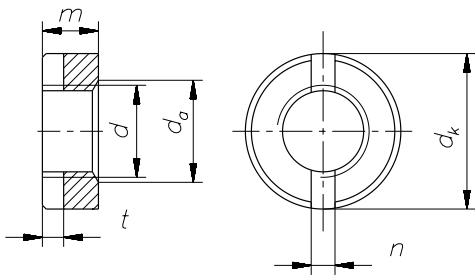
DIN466.BEM 47016 Byte

BBox: 20.0,20.0 828.0,344.0 Skalierung: 0.35



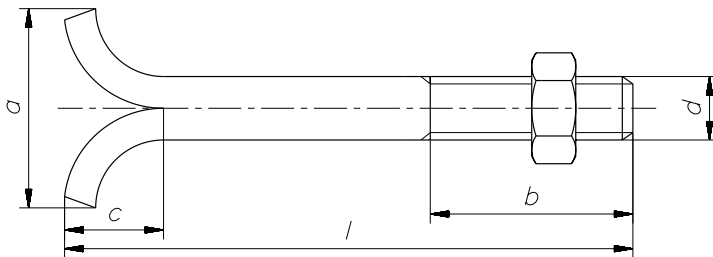
DIN547.BEM 97417 Byte

BBox: 20.0,20.0 828.0,344.0 Skalierung: 0.35



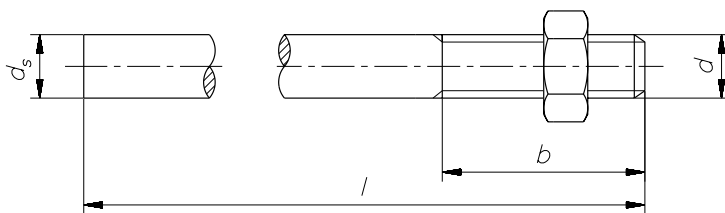
DIN546.BEM 82574 Byte

BBox: 20.0,20.0 828.0,344.0 Skalierung: 0.35



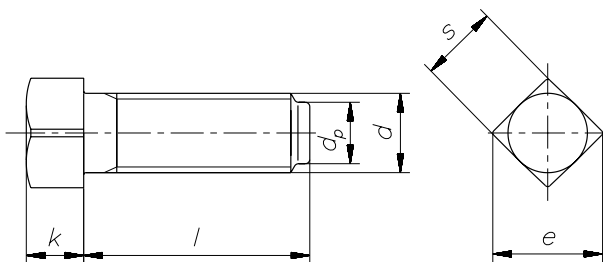
DIN529.BEM 65639 Byte

BBox: 20.0,20.0 828.0,344.0 Skalierung: 0.35



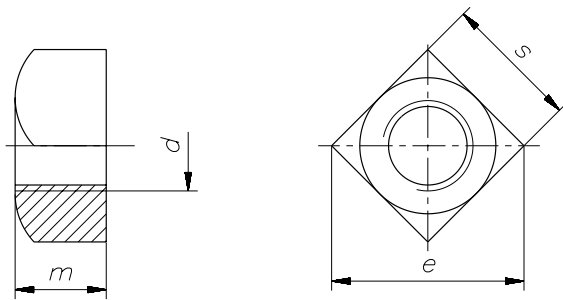
DIN525.BEM 53773 Byte

BBox: 20.0,20.0 828.0,344.0 Skalierung: 0.35



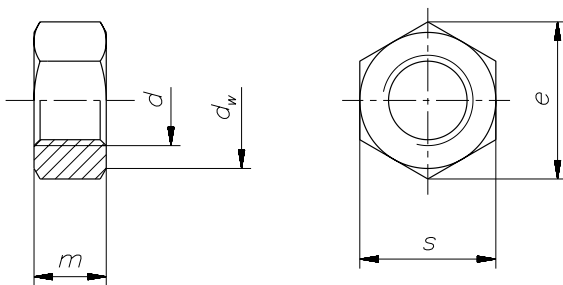
DIN479.BEM 98107 Byte

BBox: 20.0,20.0 828.0,344.0 Skalierung: 0.35



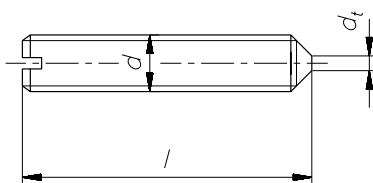
DIN557.BEM 68562 Byte

BBox: 20.0,20.0 828.0,344.0 Skalierung: 0.35



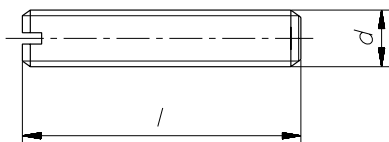
DIN555.BEM 57096 Byte

BBox: 20.0,20.0 828.0,344.0 Skalierung: 0.35



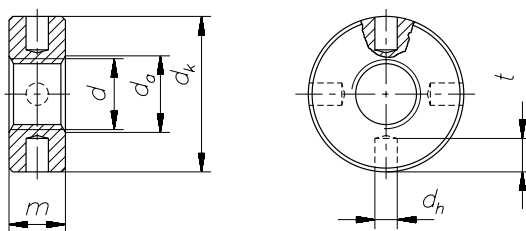
DIN553.BEM 39119 Byte

BBox: 20.0,20.0 828.0,344.0 Skalierung: 0.35



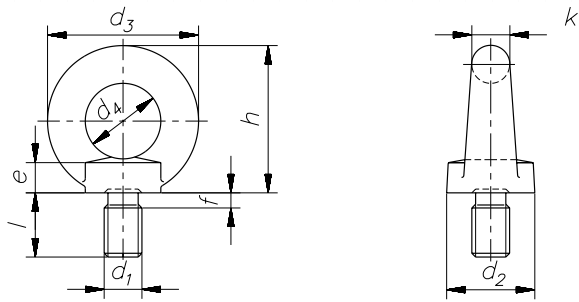
DIN551.BEM 26291 Byte

BBox: 20.0,20.0 828.0,344.0 Skalierung: 0.35



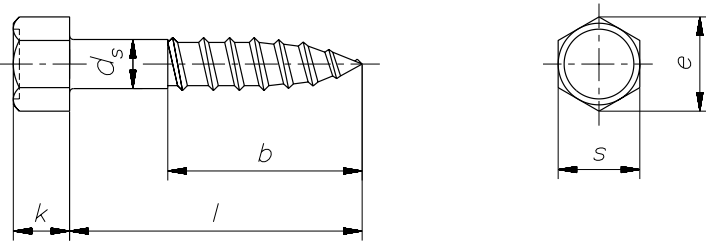
DIN548.BEM 89060 Byte

BBox: 20.0,20.0 828.0,344.0 Skalierung: 0.35



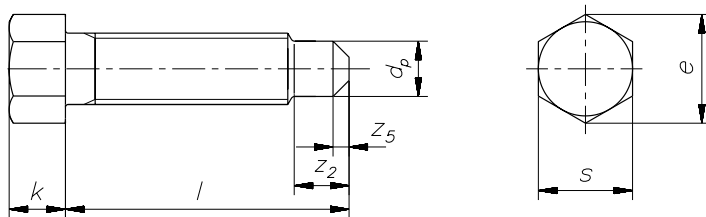
DIN580.BEM 131610 Byte

BBox: 20.0,20.0 828.0,344.0 Skalierung: 0.35



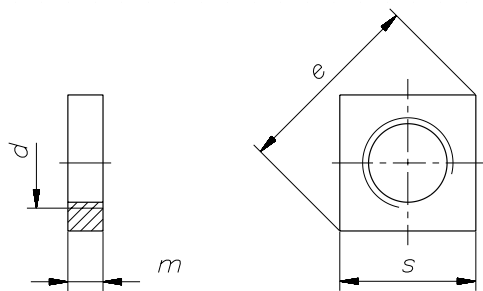
DIN571.BEM 80631 Byte

BBox: 20.0,20.0 828.0,344.0 Skalierung: 0.35



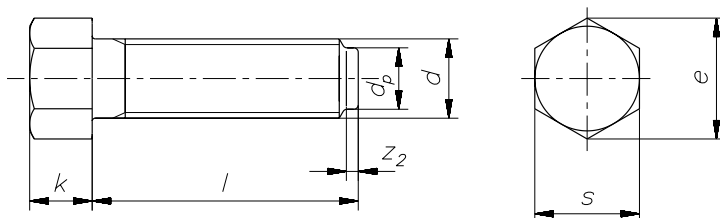
DIN564.BEM 90734 Byte

BBox: 20.0,20.0 828.0,344.0 Skalierung: 0.35



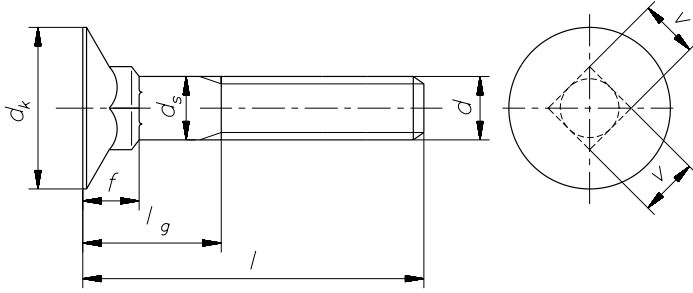
DIN562.BEM 65285 Byte

BBox: 20.0,20.0 828.0,344.0 Skalierung: 0.35



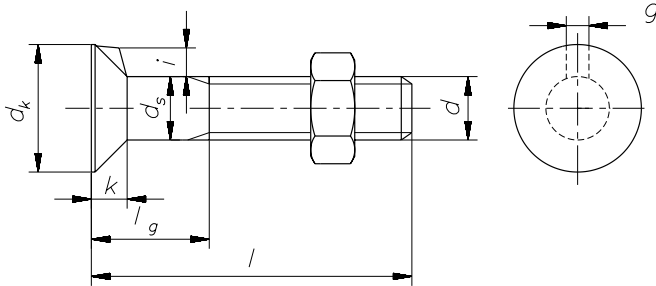
DIN561.BEM 92844 Byte

BBox: 20.0,20.0 828.0,344.0 Skalierung: 0.35



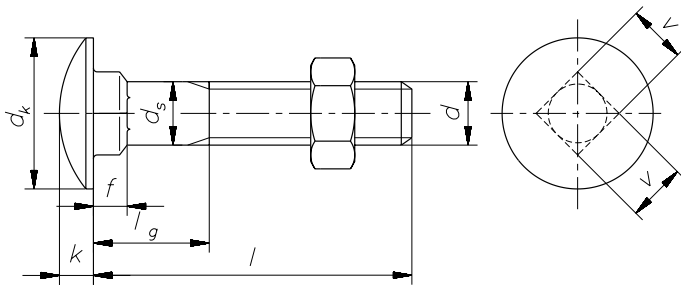
DIN605.BEM 140855 Byte

BBox: 20.0,20.0 828.0,344.0 Skalierung: 0.35



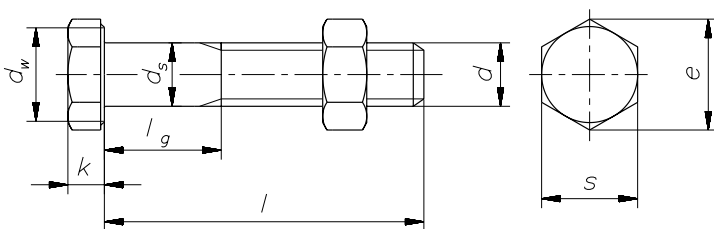
DIN604.BEM 103784 Byte

BBox: 20.0,20.0 828.0,344.0 Skalierung: 0.35



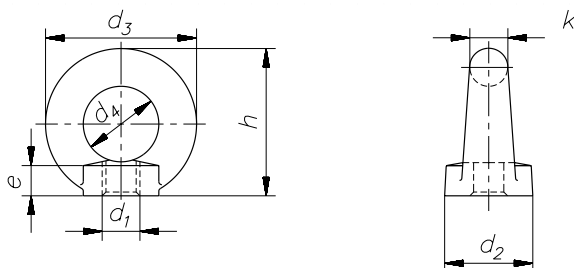
DIN603.BEM 153433 Byte

BBox: 20.0,20.0 828.0,344.0 Skalierung: 0.35



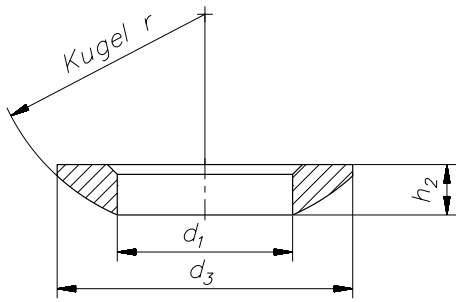
DIN601.BEM 103230 Byte

BBox: 20.0,20.0 828.0,344.0 Skalierung: 0.35



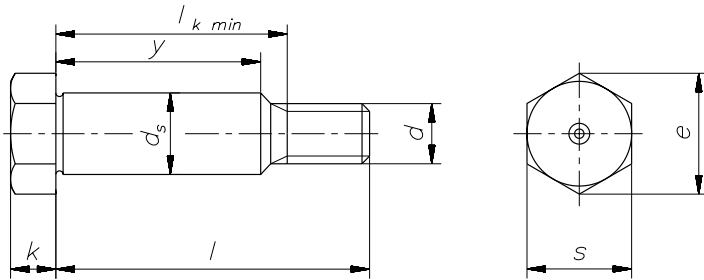
DIN582.BEM 109134 Byte

BBox: 20.0,20.0 828.0,344.0 Skalierung: 0.35



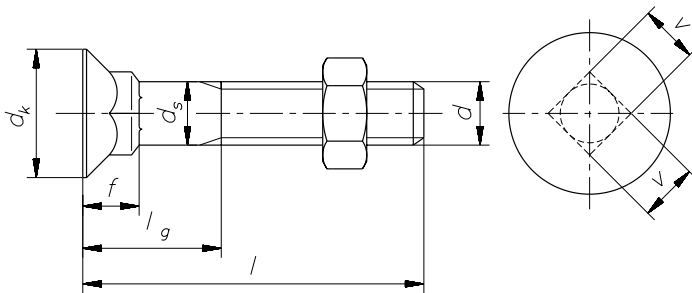
DIN6319C.BEM 50492 Byte

BBox: 20.0,20.0 828.0,344.0 Skalierung: 0.35



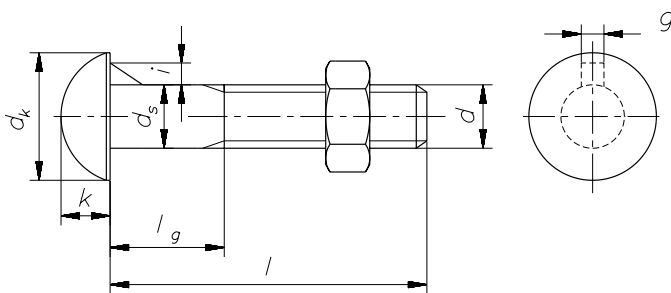
DIN609.BEM 104407 Byte

BBox: 20.0,20.0 828.0,344.0 Skalierung: 0.35



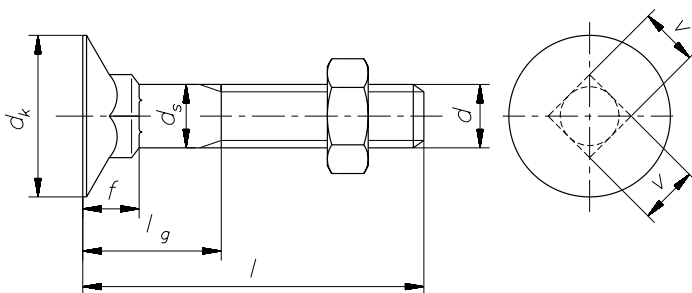
DIN608.BEM 142640 Byte

BBox: 20.0,20.0 828.0,344.0 Skalierung: 0.35



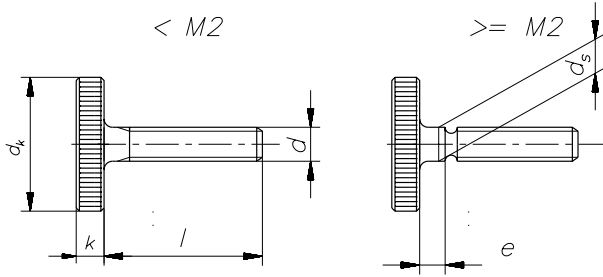
DIN607.BEM 104331 Byte

BBox: 20.0,20.0 828.0,344.0 Skalierung: 0.35



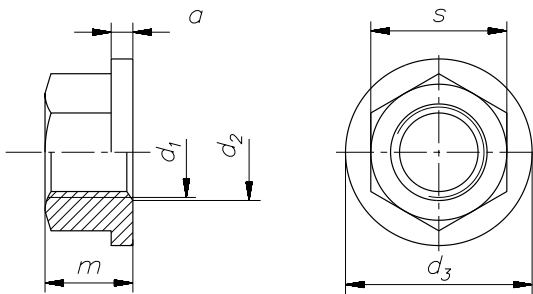
DIN605MU.BEM 142773 Byte

BBox: 20.0,20.0 828.0,344.0 Skalierung: 0.35



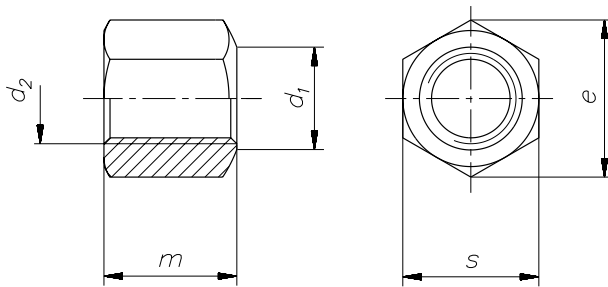
DIN653.BEM 81172 Byte

BBox: 20.0,20.0 828.0,344.0 Skalierung: 0.35



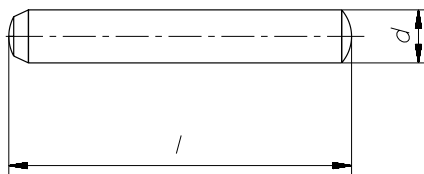
DIN6331.BEM 73055 Byte

BBox: 20.0,20.0 828.0,344.0 Skalierung: 0.35



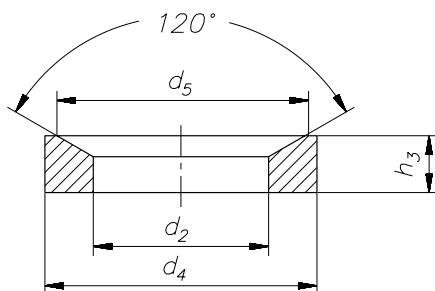
DIN6330.BEM 64852 Byte

BBox: 20.0,20.0 828.0,344.0 Skalierung: 0.35



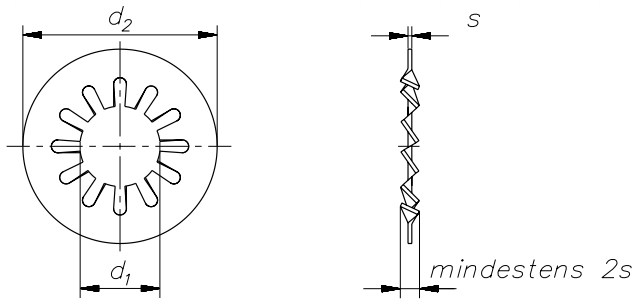
DIN6325.BEM 25737 Byte

BBox: 20.0,20.0 828.0,344.0 Skalierung: 0.35



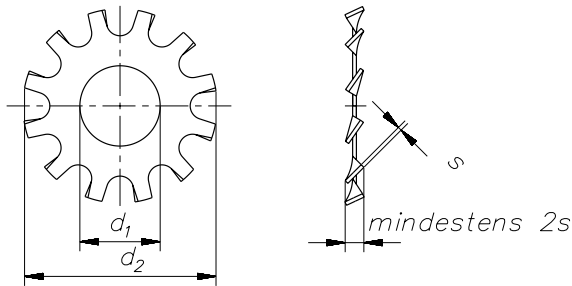
DIN6319D.BEM 76801 Byte

BBox: 20.0,20.0 828.0,344.0 Skalierung: 0.35



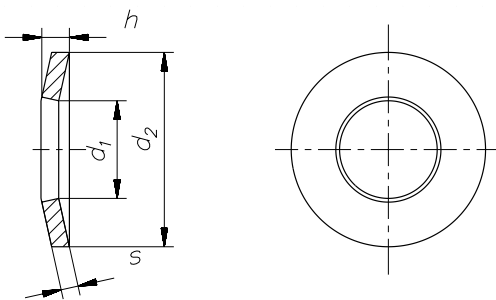
DIN6797J.BEM 66245 Byte

BBox: 20.0,20.0 828.0,344.0 Skalierung: 0.35



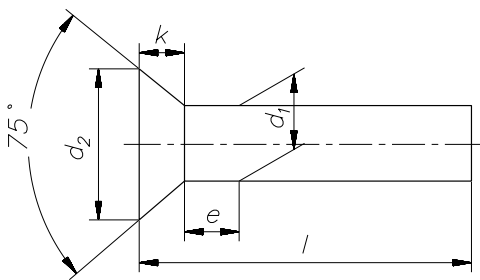
DIN6797A.BEM 79979 Byte

BBox: 20.0,20.0 828.0,344.0 Skalierung: 0.35



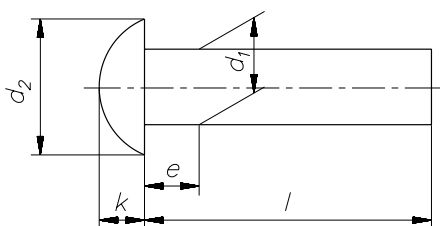
DIN6796.BEM 56663 Byte

BBox: 20.0,20.0 828.0,344.0 Skalierung: 0.35



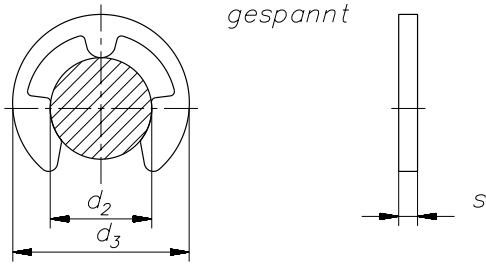
DIN661.BEM 89122 Byte

BBox: 20.0,20.0 828.0,344.0 Skalierung: 0.35



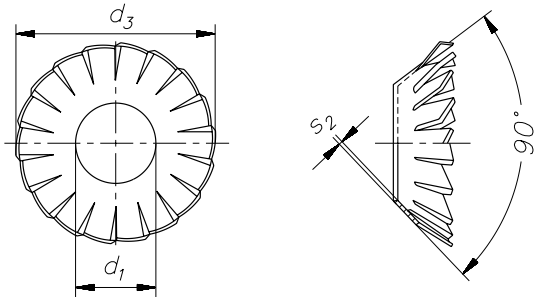
DIN660.BEM 61596 Byte

BBox: 20.0,20.0 828.0,344.0 Skalierung: 0.35



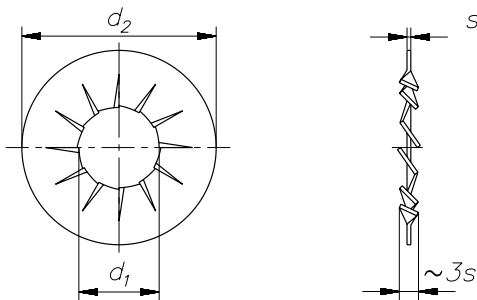
DIN6799.BEM 47155 Byte

BBox: 20.0,20.0 828.0,344.0 Skalierung: 0.35



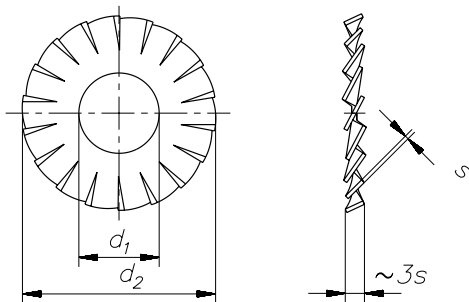
DIN6798V.BEM 96237 Byte

BBox: 20.0,20.0 828.0,344.0 Skalierung: 0.35



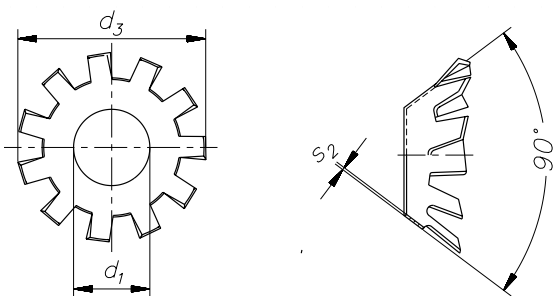
DIN6798J.BEM 56905 Byte

BBox: 20.0,20.0 828.0,344.0 Skalierung: 0.35



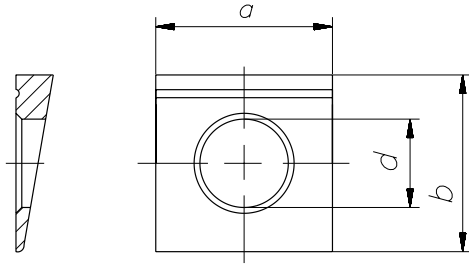
DIN6798A.BEM 75271 Byte

BBox: 20.0,20.0 828.0,344.0 Skalierung: 0.35



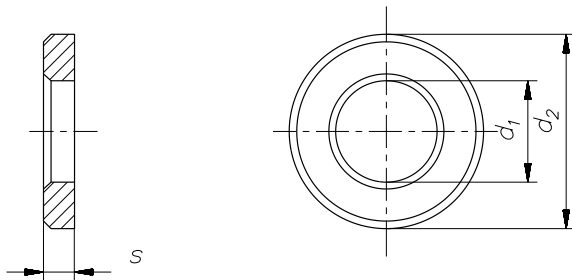
DIN6797V.BEM 89369 Byte

BBox: 20.0,20.0 828.0,344.0 Skalierung: 0.35



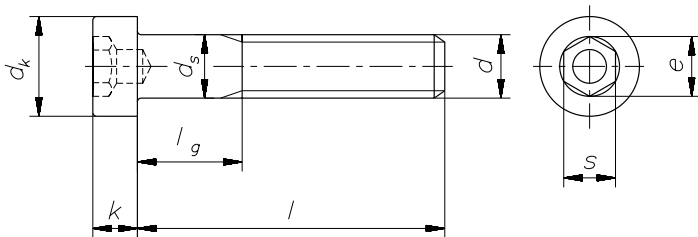
DIN6917.BEM 43729 Byte

BBox: 20.0,20.0 828.0,344.0 Skalierung: 0.35



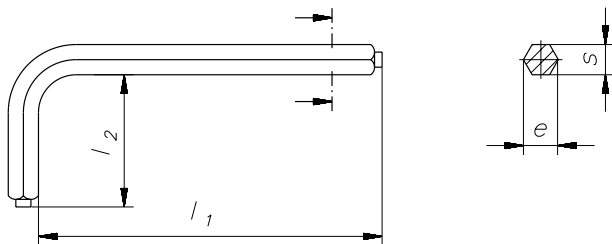
DIN6916.BEM 47101 Byte

BBox: 20.0,20.0 828.0,344.0 Skalierung: 0.35



DIN6912.BEM 103502 Byte

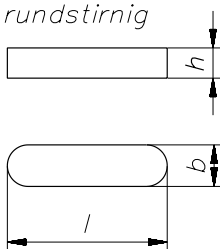
BBox: 20.0,20.0 828.0,344.0 Skalierung: 0.35



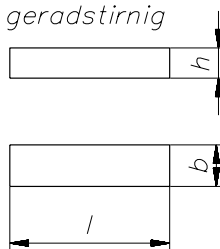
DIN6911.BEM 64416 Byte

BBox: 20.0,20.0 828.0,344.0 Skalierung: 0.35

*Form A
rundstirnig*

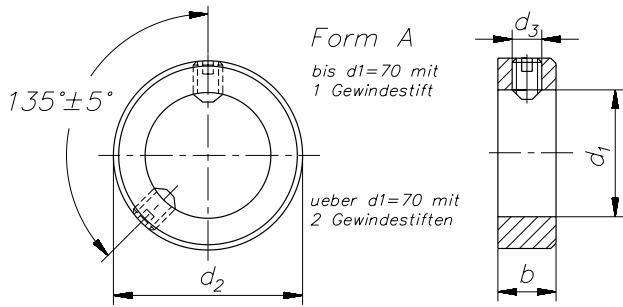


*Form B
geradstirnig*



DIN6885.BEM 80108 Byte

BBox: 20.0,20.0 828.0,344.0 Skalierung: 0.35

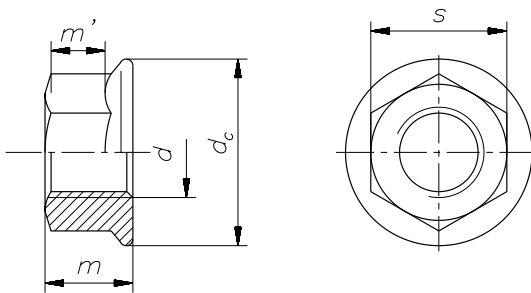


DIN705.BEM 90896 Byte

BBox: 20.0,20.0 828.0,344.0 Skalierung: 0.35

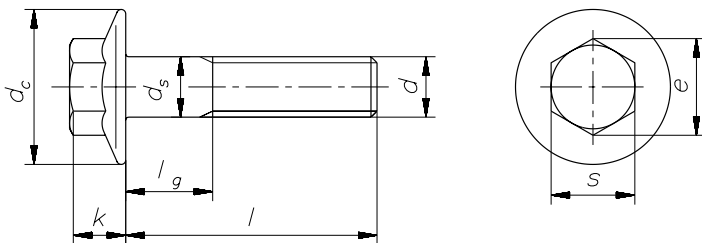
DIN6926.BEM 79187 Byte

BBox: 20.0,20.0 828.0,344.0 Skalierung: 0.35



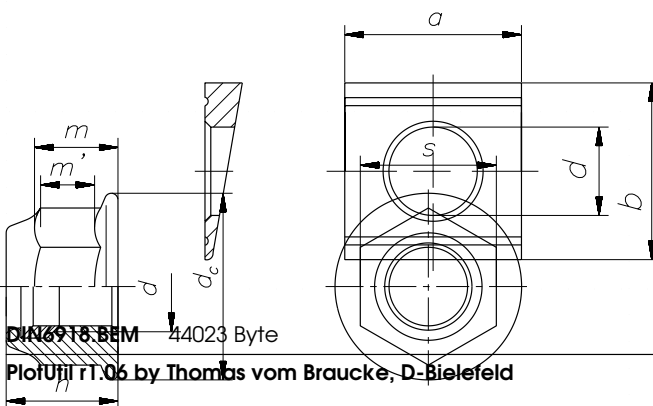
DIN6923.BEM 65952 Byte

BBox: 20.0,20.0 828.0,344.0 Skalierung: 0.35



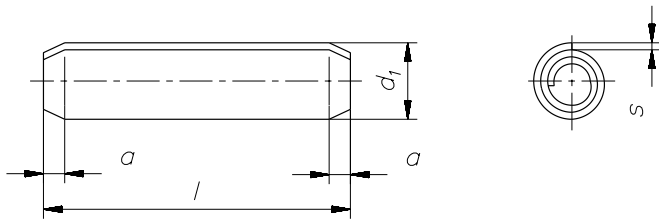
DIN6921.BEM 103200 Byte

BBox: 20.0,20.0 828.0,344.0 Skalierung: 0.35



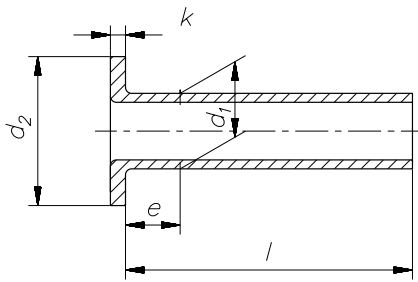
DIN6918.BEM 44023 Byte

BBox: 20.0,20.0 828.0,344.0 Skalierung: 0.35



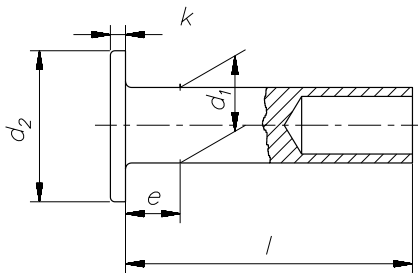
DIN7343.BEM 67008 Byte

BBox: 20.0,20.0 828.0,344.0 Skalierung: 0.35



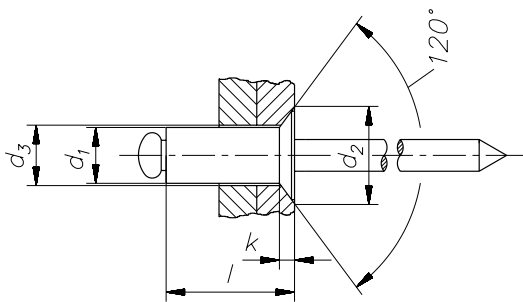
DIN7338C.BEM 64419 Byte

BBox: 20.0,20.0 828.0,344.0 Skalierung: 0.35



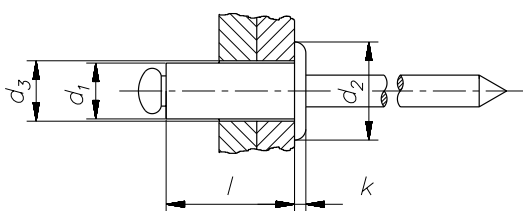
DIN7338B.BEM 65004 Byte

BBox: 20.0,20.0 828.0,344.0 Skalierung: 0.35



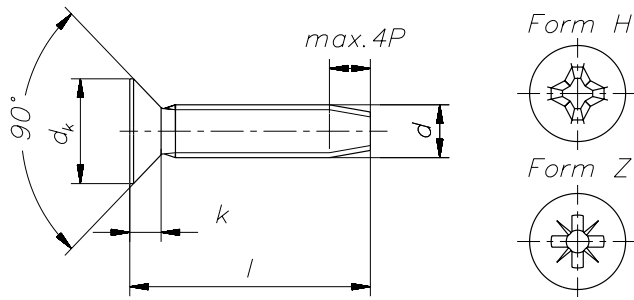
DIN7337B.BEM 98969 Byte

BBox: 20.0,20.0 828.0,344.0 Skalierung: 0.35



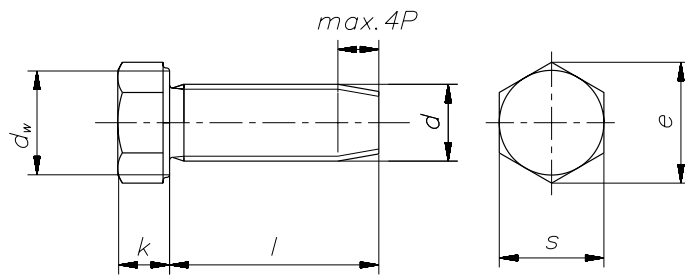
DIN7337A.BEM 69545 Byte

BBox: 20.0,20.0 828.0,344.0 Skalierung: 0.35



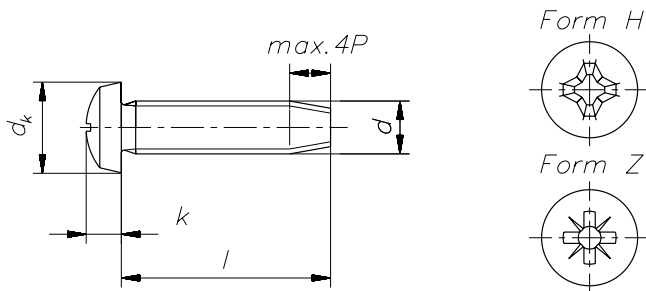
DIN7500M.BEM 113449 Byte

BBox: 20.0,20.0 828.0,344.0 Skalierung: 0.35



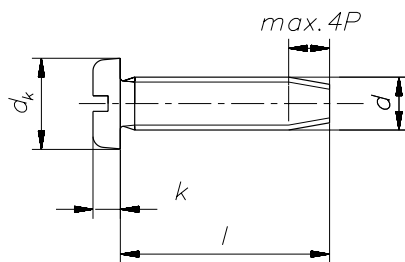
DIN7500D.BEM 102976 Byte

BBox: 20.0,20.0 828.0,344.0 Skalierung: 0.35



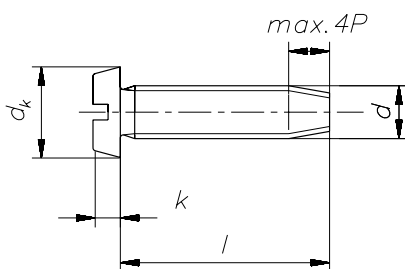
DIN7500C.BEM 83942 Byte

BBox: 20.0,20.0 828.0,344.0 Skalierung: 0.35



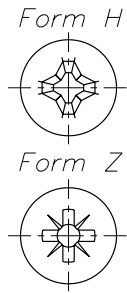
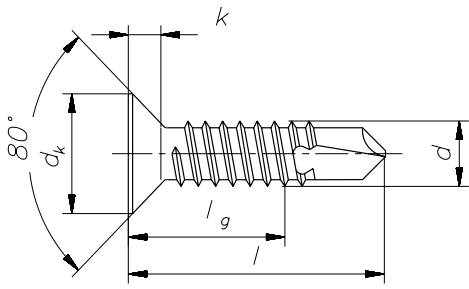
DIN7500B.BEM 76576 Byte

BBox: 20.0,20.0 828.0,344.0 Skalierung: 0.35



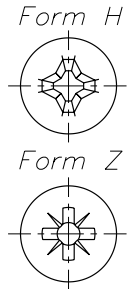
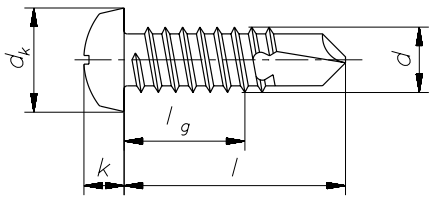
DIN7500A.BEM 76495 Byte

BBox: 20.0,20.0 828.0,344.0 Skalierung: 0.35



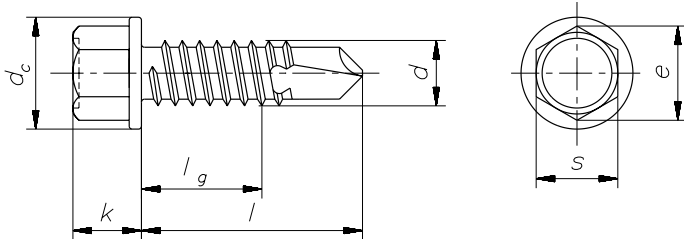
DIN7504P.BEM 102199 Byte

BBox: 20.0,20.0 828.0,344.0 Skalierung: 0.35



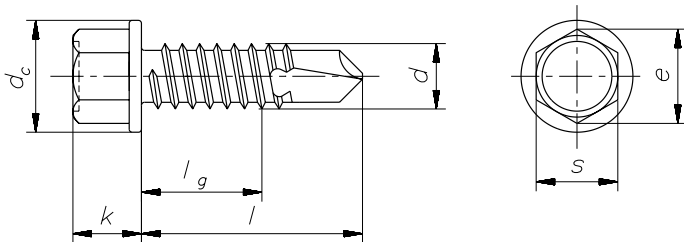
DIN7504N.BEM 71512 Byte

BBox: 20.0,20.0 828.0,344.0 Skalierung: 0.35



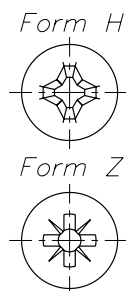
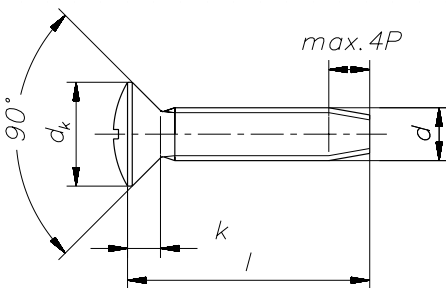
DIN7504K.BEM 97143 Byte

BBox: 20.0,20.0 828.0,344.0 Skalierung: 0.35



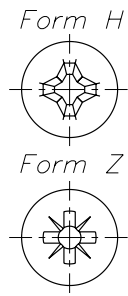
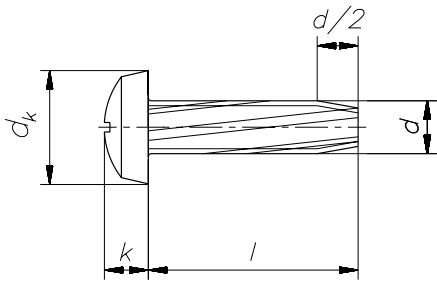
DIN7504.BEM 97142 Byte

BBox: 20.0,20.0 828.0,344.0 Skalierung: 0.35



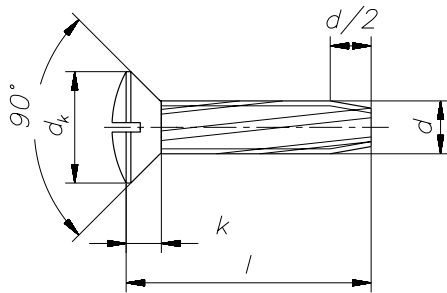
DIN7500N.BEM 113729 Byte

BBox: 20.0,20.0 828.0,344.0 Skalierung: 0.35



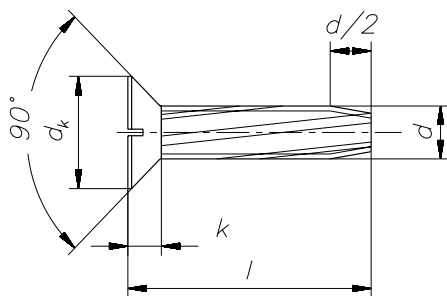
DIN7516A.BEM 83774 Byte

BBox: 20.0,20.0 828.0,344.0 Skalierung: 0.35



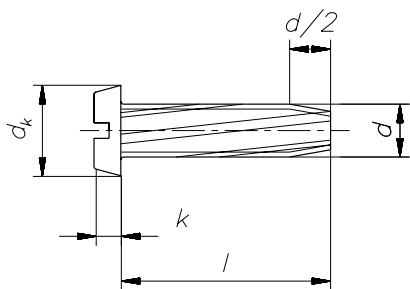
DIN7513G.BEM 92165 Byte

BBox: 20.0,20.0 828.0,344.0 Skalierung: 0.35



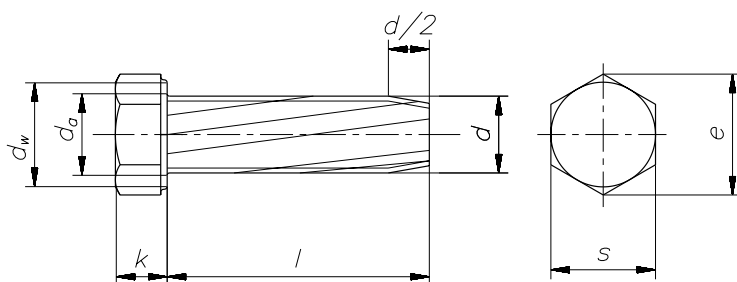
DIN7513F.BEM 92509 Byte

BBox: 20.0,20.0 828.0,344.0 Skalierung: 0.35



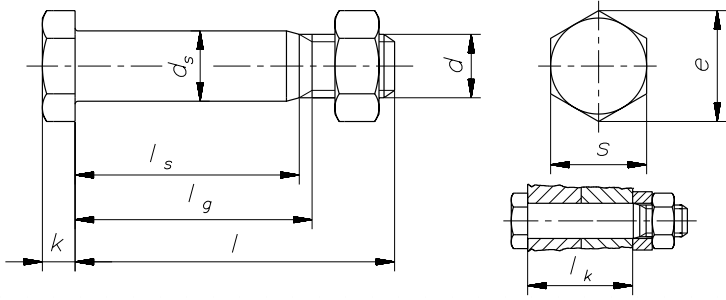
DIN7513B.BEM 75988 Byte

BBox: 20.0,20.0 828.0,344.0 Skalierung: 0.35



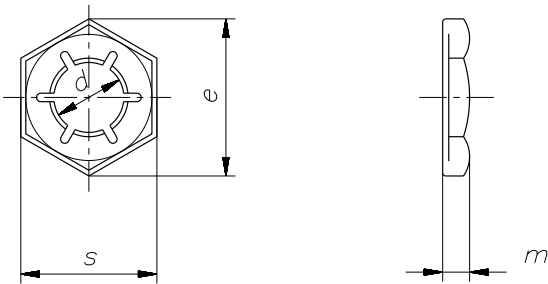
DIN7513A.BEM 114440 Byte

BBox: 20.0,20.0 828.0,344.0 Skalierung: 0.35



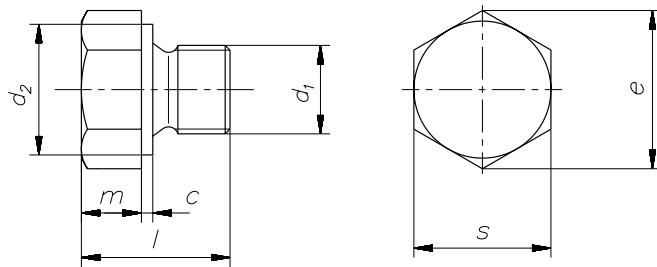
DIN7968.BEM 126776 Byte

BBox: 20.0,20.0 828.0,344.0 Skalierung: 0.35



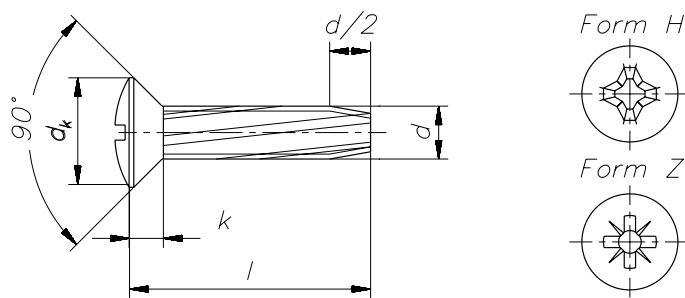
DIN7967.BEM 66743 Byte

BBox: 20.0,20.0 828.0,344.0 Skalierung: 0.35



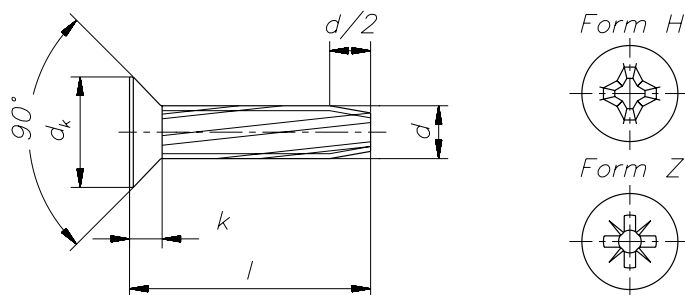
DIN7604.BEM 89185 Byte

BBox: 20.0,20.0 828.0,344.0 Skalierung: 0.35



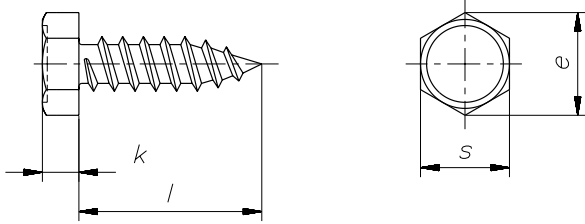
DIN7516E.BEM 100999 Byte

BBox: 20.0,20.0 828.0,344.0 Skalierung: 0.35



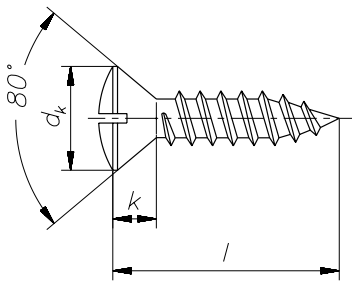
DIN7516D.BEM 100264 Byte

BBox: 20.0,20.0 828.0,344.0 Skalierung: 0.35



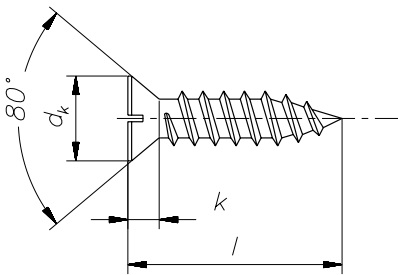
DIN7976.BEM 56858 Byte

BBox: 20.0,20.0 828.0,344.0 Skalierung: 0.35



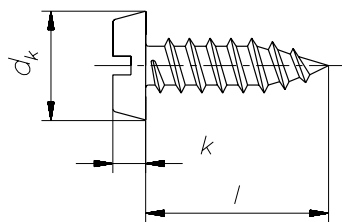
DIN7973.BEM 64979 Byte

BBox: 20.0,20.0 828.0,344.0 Skalierung: 0.35



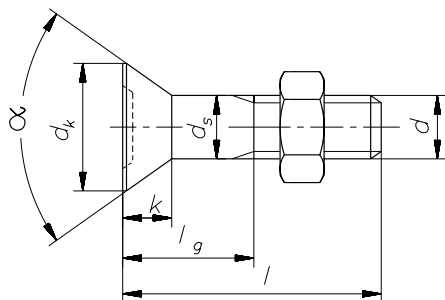
DIN7972.BEM 65265 Byte

BBox: 20.0,20.0 828.0,344.0 Skalierung: 0.35



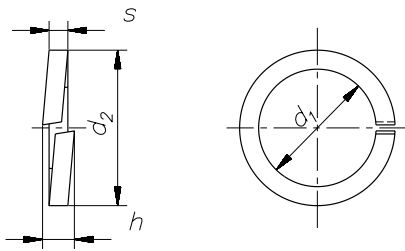
DIN7971.BEM 38795 Byte

BBox: 20.0,20.0 828.0,344.0 Skalierung: 0.35



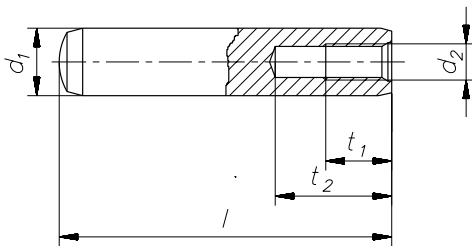
DIN7969.BEM 102404 Byte

BBox: 20.0,20.0 828.0,344.0 Skalierung: 0.35



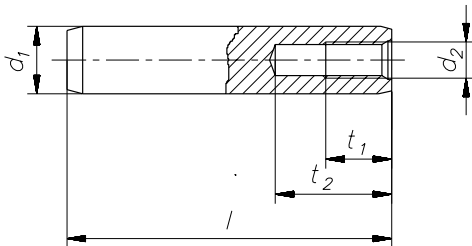
DIN7980.BEM 70719 Byte

BBox: 20.0,20.0 828.0,344.0 Skalierung: 0.35



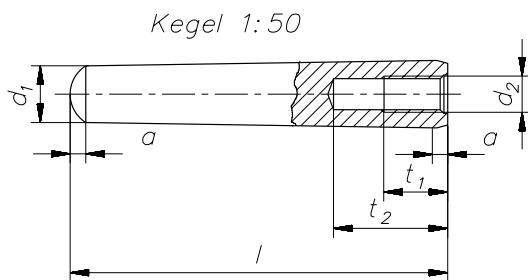
DIN7979D.BEM 65781 Byte

BBox: 20.0,20.0 828.0,344.0 Skalierung: 0.35



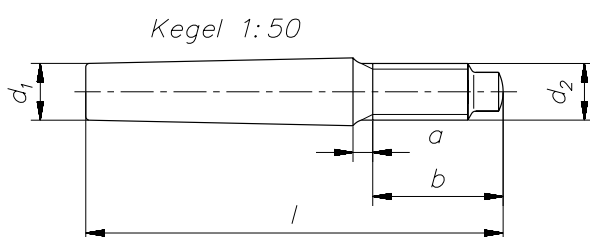
DIN7979C.BEM 65717 Byte

BBox: 20.0,20.0 828.0,344.0 Skalierung: 0.35



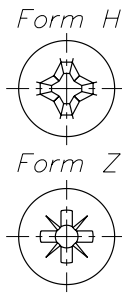
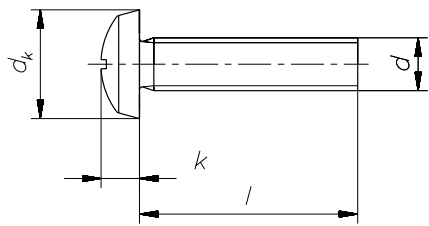
DIN7978.BEM 91073 Byte

BBox: 20.0,20.0 828.0,344.0 Skalierung: 0.35



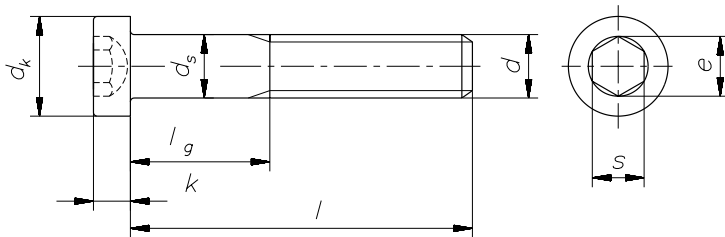
DIN7977.BEM 66313 Byte

BBox: 20.0,20.0 828.0,344.0 Skalierung: 0.35



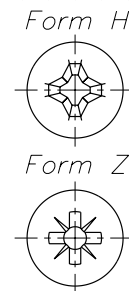
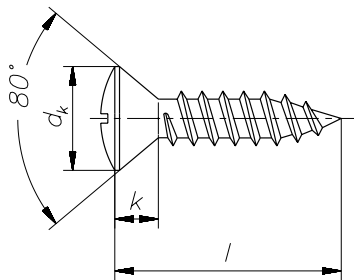
DIN7985.BEM 70771 Byte

BBox: 20.0,20.0 828.0,344.0 Skalierung: 0.35



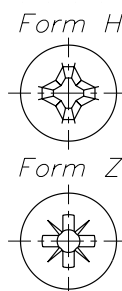
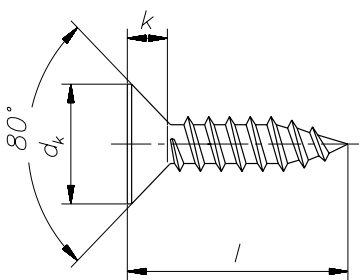
DIN7984.BEM 103932 Byte

BBox: 20.0,20.0 828.0,344.0 Skalierung: 0.35



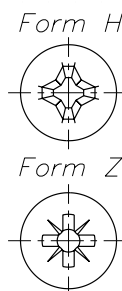
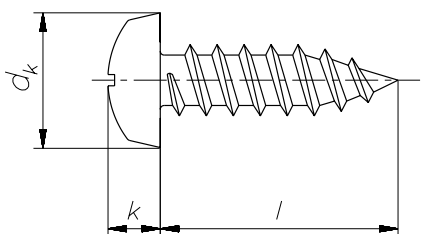
DIN7983.BEM 73476 Byte

BBox: 20.0,20.0 828.0,344.0 Skalierung: 0.35



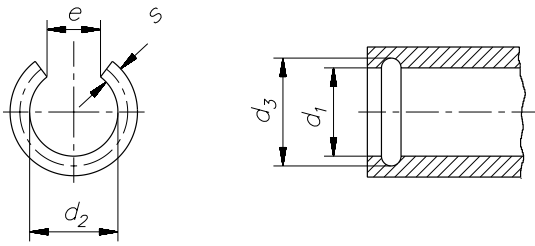
DIN7982.BEM 74748 Byte

BBox: 20.0,20.0 828.0,344.0 Skalierung: 0.35



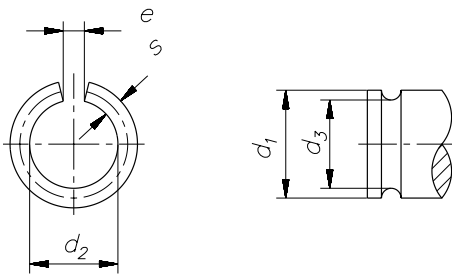
DIN7981.BEM 45603 Byte

BBox: 20.0,20.0 828.0,344.0 Skalierung: 0.35



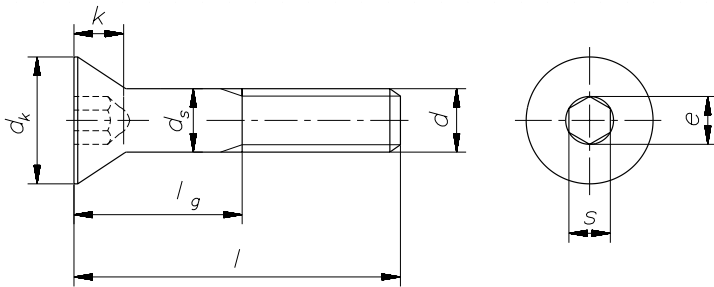
DIN7993B.BEM 85244 Byte

BBox: 20.0,20.0 828.0,344.0 Skalierung: 0.35



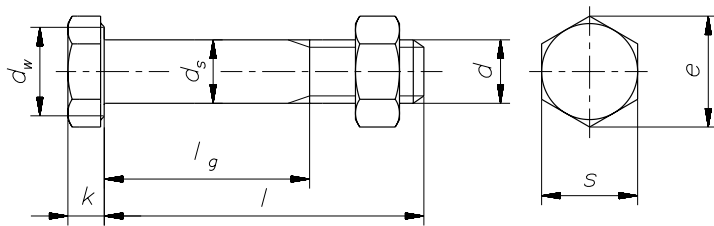
DIN7993A.BEM 85274 Byte

BBox: 20.0,20.0 828.0,344.0 Skalierung: 0.35



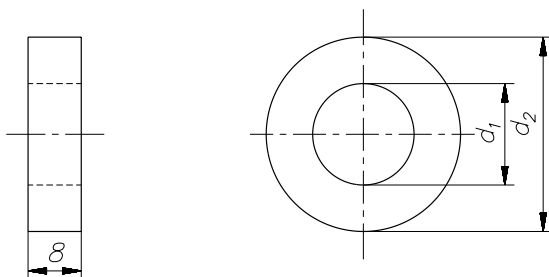
DIN7991.BEM 104742 Byte

BBox: 20.0,20.0 828.0,344.0 Skalierung: 0.35



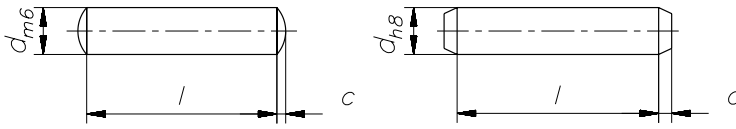
DIN7990.BEM 103660 Byte

BBox: 20.0,20.0 828.0,344.0 Skalierung: 0.35



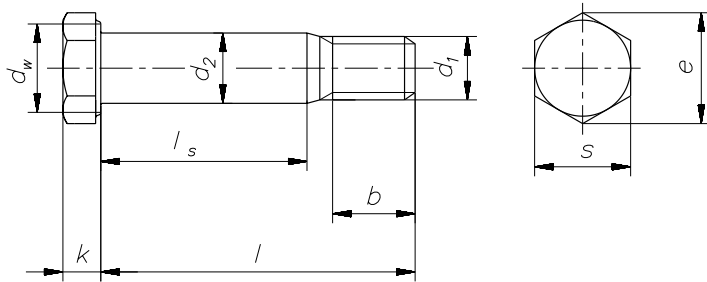
DIN7989.BEM 42704 Byte

BBox: 20.0,20.0 828.0,344.0 Skalierung: 0.35



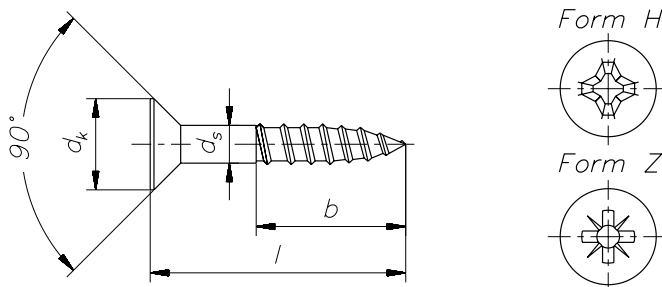
DIN7.BEM 76812 Byte

BBox: 20.0,20.0 828.0,344.0 Skalierung: 0.35



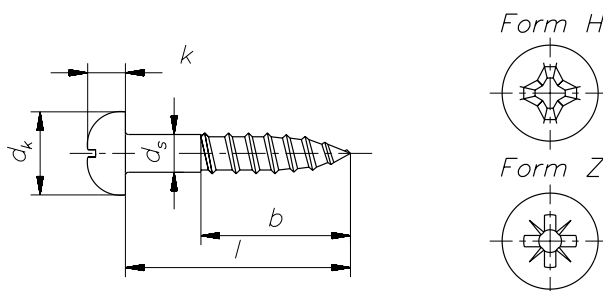
DIN7999.BEM 115724 Byte

BBox: 20.0,20.0 828.0,344.0 Skalierung: 0.35



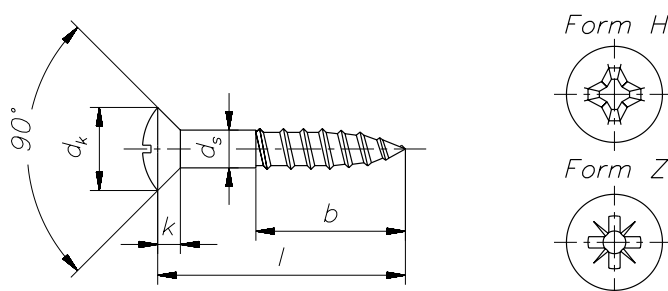
DIN7997.BEM 88117 Byte

BBox: 20.0,20.0 828.0,344.0 Skalierung: 0.35



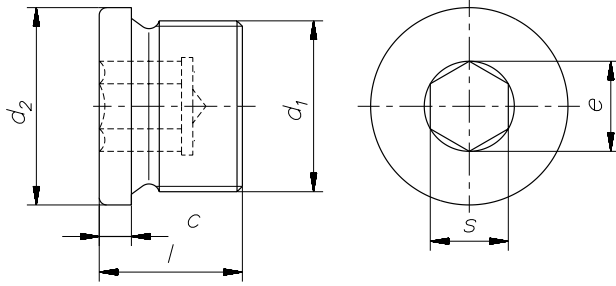
DIN7996.BEM 72651 Byte

BBox: 20.0,20.0 828.0,344.0 Skalierung: 0.35



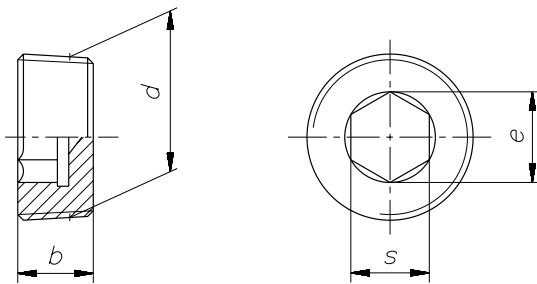
DIN7995.BEM 100412 Byte

BBox: 20.0,20.0 828.0,344.0 Skalierung: 0.35



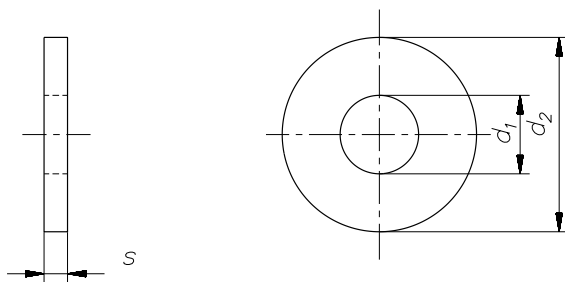
DIN908.BEM 83381 Byte

BBox: 20.0,20.0 828.0,344.0 Skalierung: 0.35



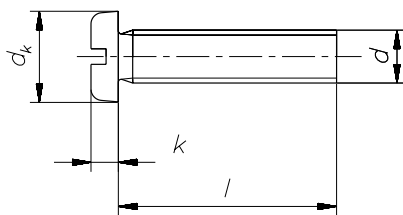
DIN906.BEM 56284 Byte

BBox: 20.0,20.0 828.0,344.0 Skalierung: 0.35



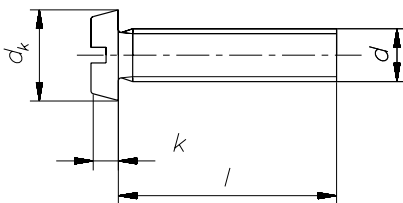
DIN9021.BEM 42141 Byte

BBox: 20.0,20.0 828.0,344.0 Skalierung: 0.35



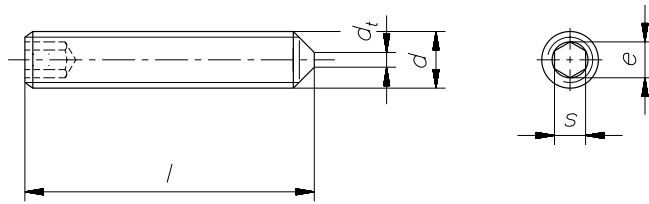
DIN85.BEM 63252 Byte

BBox: 20.0,20.0 828.0,344.0 Skalierung: 0.35



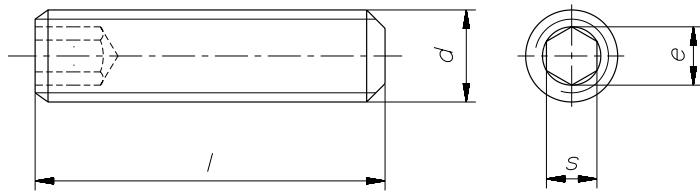
DIN84.BEM 64187 Byte

BBox: 20.0,20.0 828.0,344.0 Skalierung: 0.35



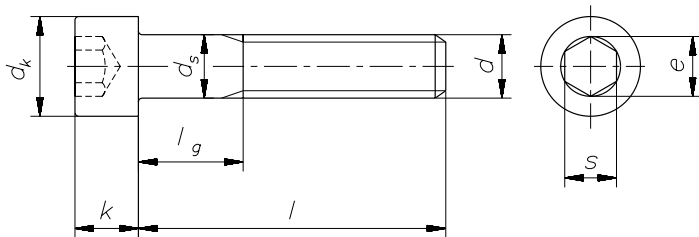
DIN914.BEM 69514 Byte

BBox: 20.0,20.0 828.0,344.0 Skalierung: 0.35



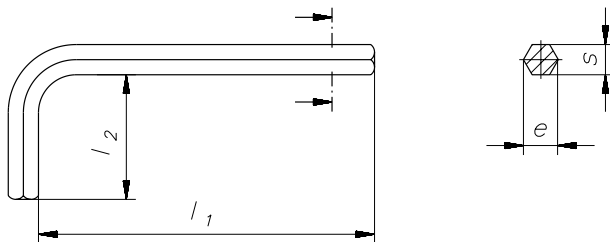
DIN913.BEM 57916 Byte

BBox: 20.0,20.0 828.0,344.0 Skalierung: 0.35



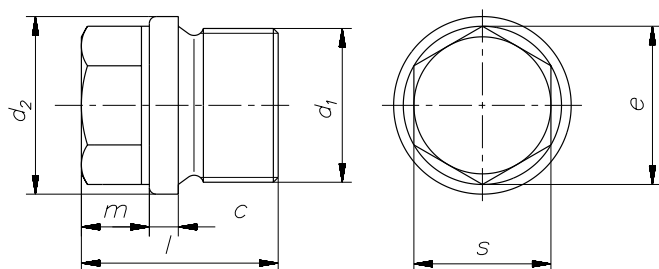
DIN912.BEM 102173 Byte

BBox: 20.0,20.0 828.0,344.0 Skalierung: 0.35



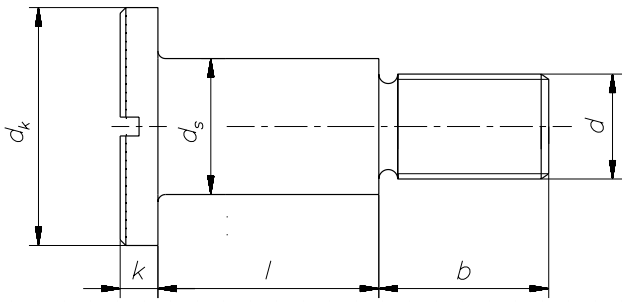
DIN911.BEM 64214 Byte

BBox: 20.0,20.0 828.0,344.0 Skalierung: 0.35



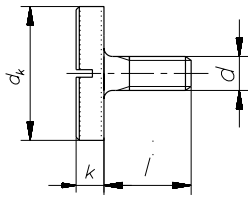
DIN910.BEM 95826 Byte

BBox: 20.0,20.0 828.0,344.0 Skalierung: 0.35



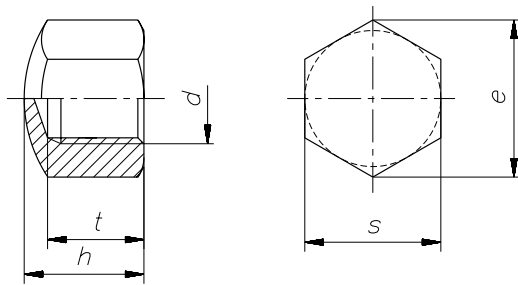
DIN923.BEM 74823 Byte

BBox: 20.0,20.0 828.0,344.0 Skalierung: 0.35



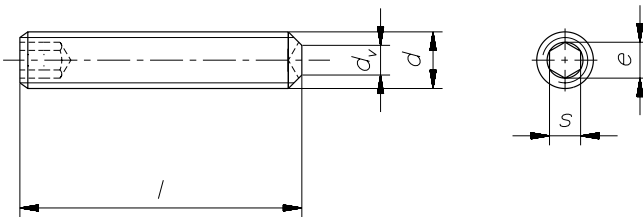
DIN921.BEM 50373 Byte

BBox: 20.0,20.0 828.0,344.0 Skalierung: 0.35



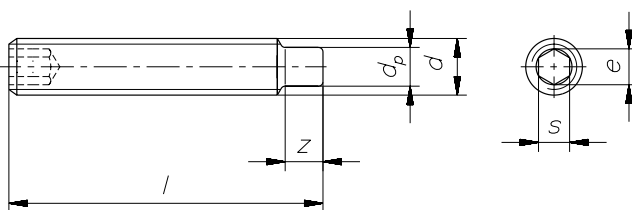
DIN917.BEM 61357 Byte

BBox: 20.0,20.0 828.0,344.0 Skalierung: 0.35



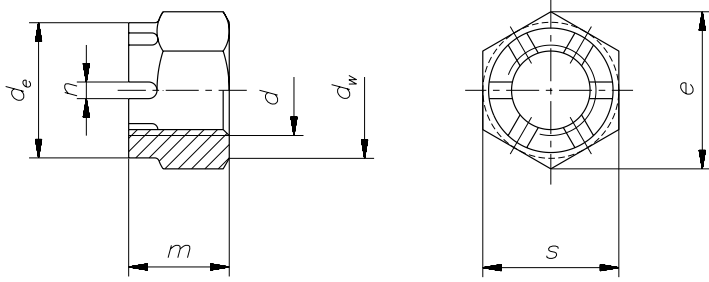
DIN916.BEM 69589 Byte

BBox: 20.0,20.0 828.0,344.0 Skalierung: 0.35



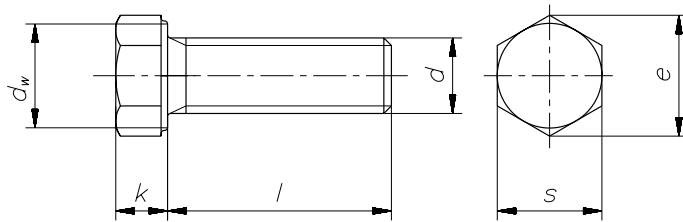
DIN915.BEM 82822 Byte

BBox: 20.0,20.0 828.0,344.0 Skalierung: 0.35



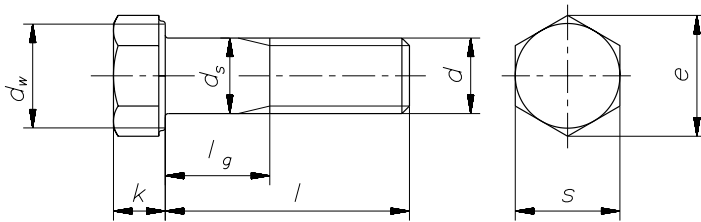
DIN935.BEM 83774 Byte

BBox: 20.0,20.0 828.0,344.0 Skalierung: 0.35



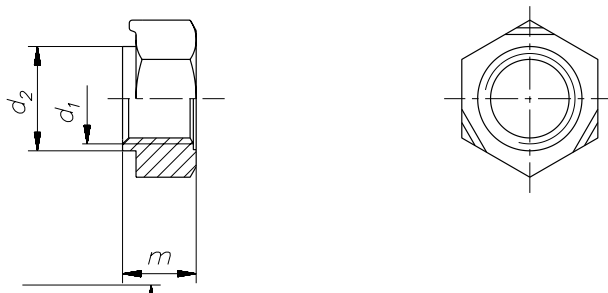
DIN933.BEM 78446 Byte

BBox: 20.0,20.0 828.0,344.0 Skalierung: 0.35



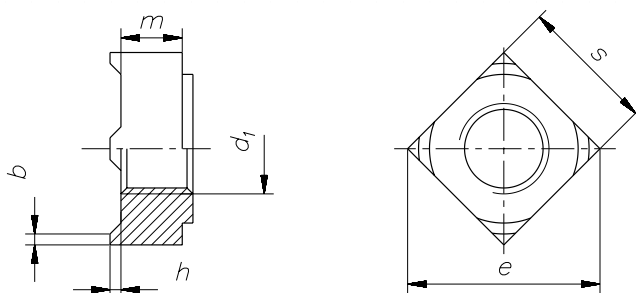
DIN931.BEM 102231 Byte

BBox: 20.0,20.0 828.0,344.0 Skalierung: 0.35



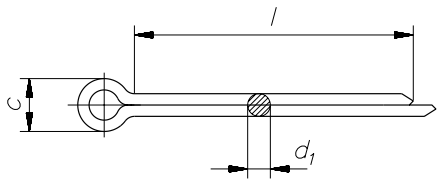
DIN929.BEM 39227 Byte

BBox: 20.0,20.0 828.0,344.0 Skalierung: 0.35



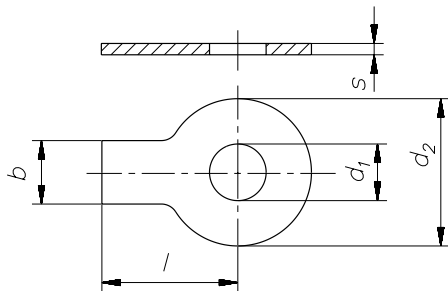
DIN928.BEM 91703 Byte

BBox: 20.0,20.0 828.0,344.0 Skalierung: 0.35



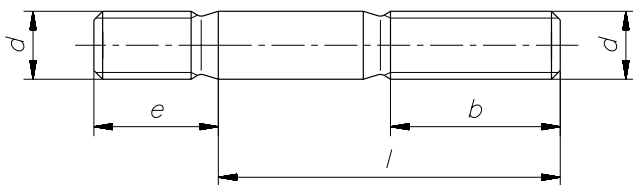
DIN94.BEM 40937 Byte

BBox: 20.0,20.0 828.0,344.0 Skalierung: 0.35



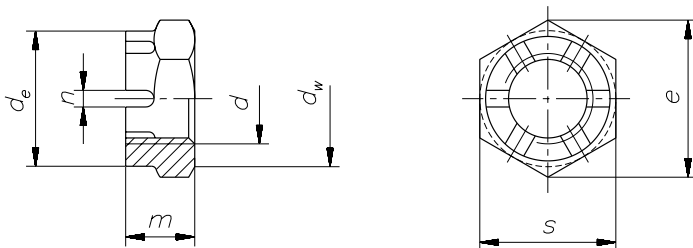
DIN93.BEM 67313 Byte

BBox: 20.0,20.0 828.0,344.0 Skalierung: 0.35



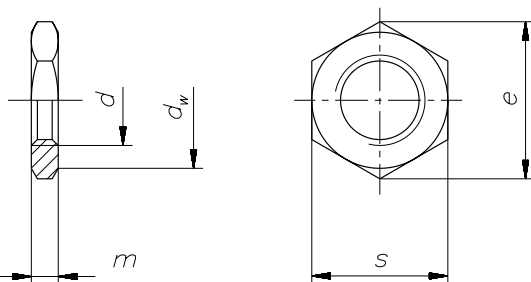
DIN938.BEM 62485 Byte

BBox: 20.0,20.0 828.0,344.0 Skalierung: 0.35



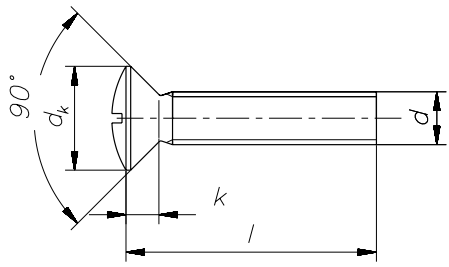
DIN937.BEM 85536 Byte

BBox: 20.0,20.0 828.0,344.0 Skalierung: 0.35

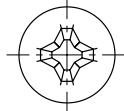


DIN936.BEM 56080 Byte

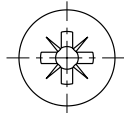
BBox: 20.0,20.0 828.0,344.0 Skalierung: 0.35



Form H

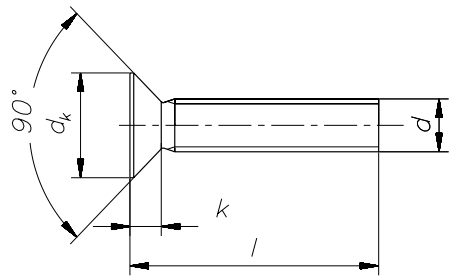


Form Z

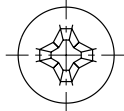


DIN966.BEM 100497 Byte

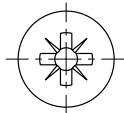
BBox: 20.0,20.0 828.0,344.0 Skalierung: 0.35



Form H

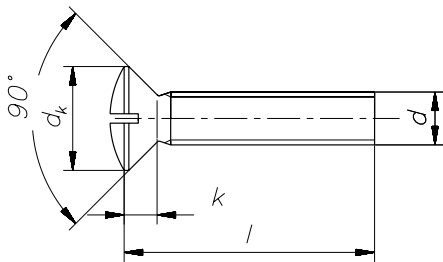


Form Z



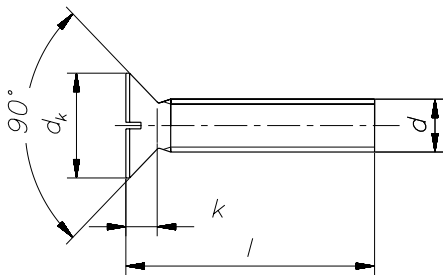
DIN965.BEM 101120 Byte

BBox: 20.0,20.0 828.0,344.0 Skalierung: 0.35



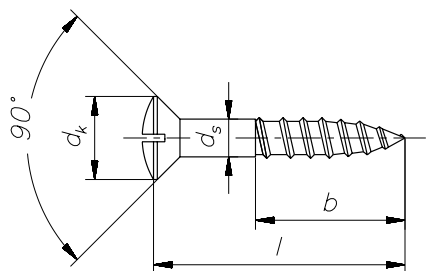
DIN964.BEM 92432 Byte

BBox: 20.0,20.0 828.0,344.0 Skalierung: 0.35



DIN963.BEM 93071 Byte

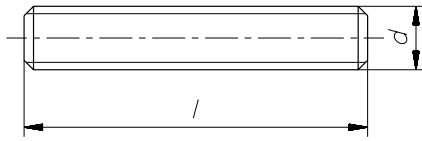
BBox: 20.0,20.0 828.0,344.0 Skalierung: 0.35



$$b \geq 0,6l$$

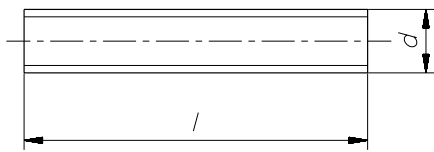
DIN95.BEM 82687 Byte

BBox: 20.0,20.0 828.0,344.0 Skalierung: 0.35



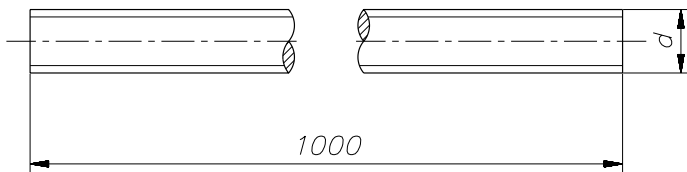
DIN976B.BEM 26200 Byte

BBox: 20.0,20.0 828.0,344.0 Skalierung: 0.35



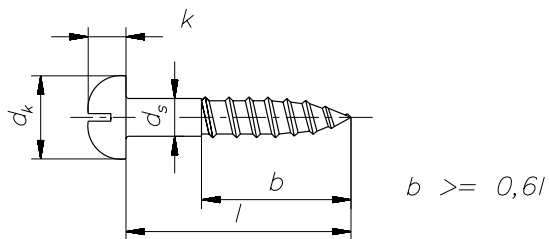
DIN976A.BEM 26087 Byte

BBox: 20.0,20.0 828.0,344.0 Skalierung: 0.35



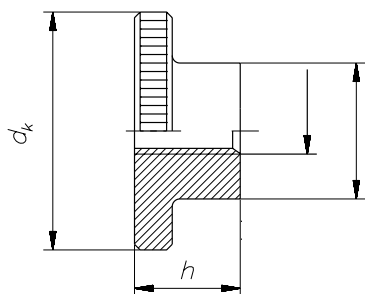
DIN975.BEM 29181 Byte

BBox: 20.0,20.0 828.0,344.0 Skalierung: 0.35



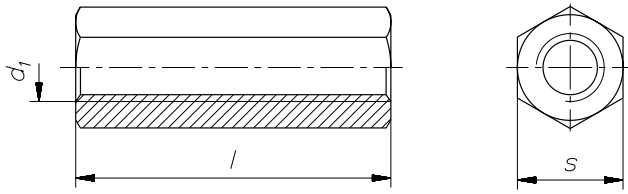
DIN96.BEM 67196 Byte

BBox: 20.0,20.0 828.0,344.0 Skalierung: 0.35



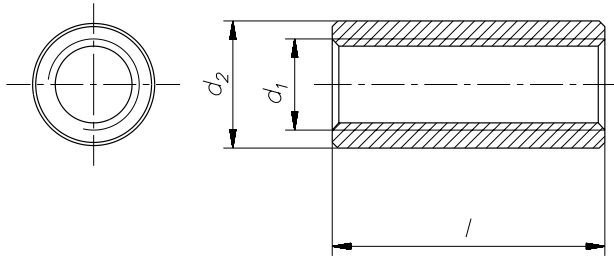
DIN967.BEM 46363 Byte

BBox: 20.0,20.0 828.0,344.0 Skalierung: 0.35



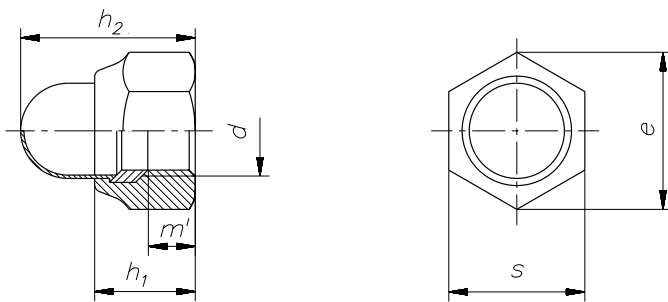
DISSE.BEM 38513 Byte

BBox: 20.0,20.0 828.0,344.0 Skalierung: 0.35



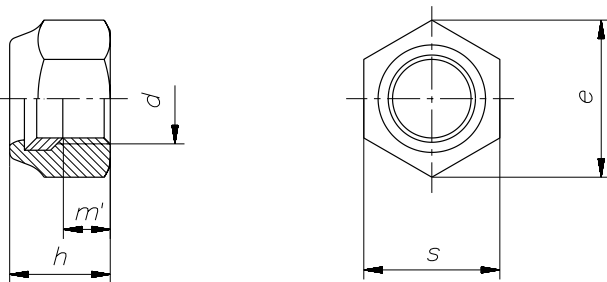
DISRU.BEM 47774 Byte

BBox: 20.0,20.0 828.0,344.0 Skalierung: 0.35



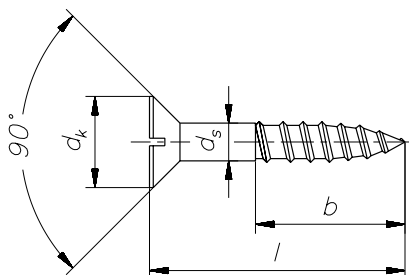
DIN986.BEM 75614 Byte

BBox: 20.0,20.0 828.0,344.0 Skalierung: 0.35



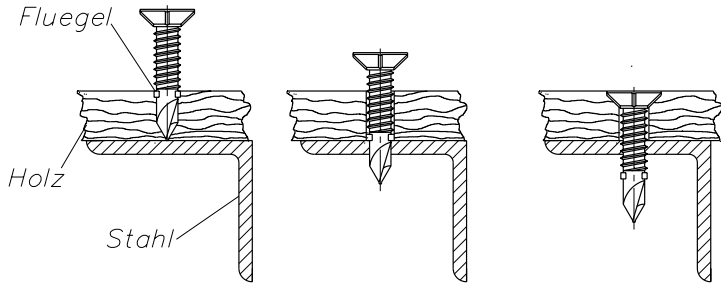
DIN980.BEM 62696 Byte

BBox: 20.0,20.0 828.0,344.0 Skalierung: 0.35



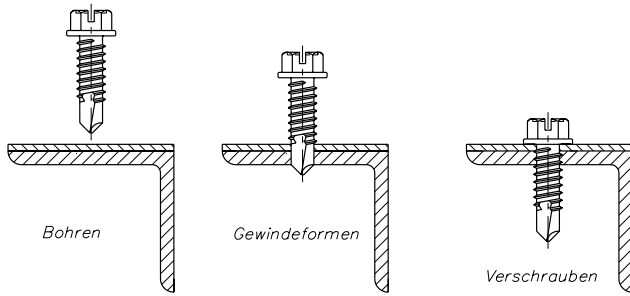
DIN97.BEM 81379 Byte

BBox: 20.0,20.0 828.0,344.0 Skalierung: 0.35



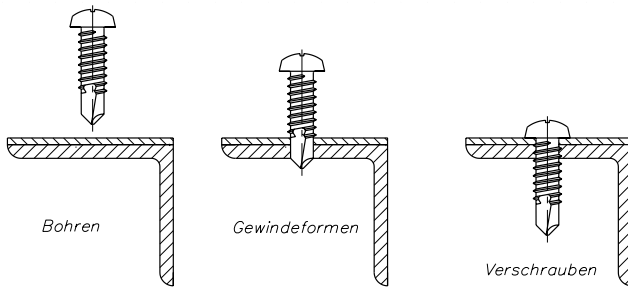
EINFLU.BEM 84147 Byte

BBox: 20.0,20.0 828.0,344.0 Skalierung: 0.35



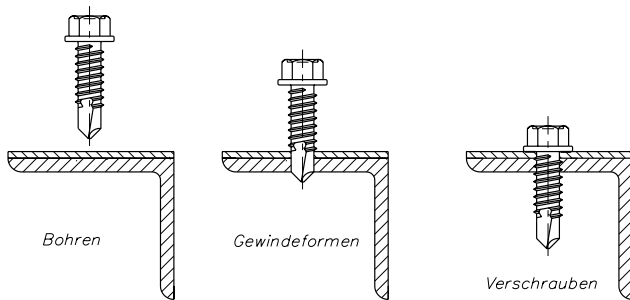
EIN7504C.BEM 26361 Byte

BBox: 20.0,20.0 828.0,344.0 Skalierung: 0.35



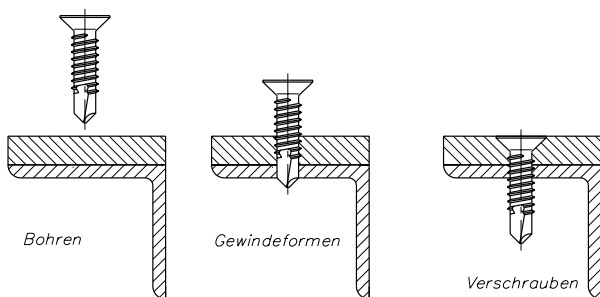
EI7504N.BEM 23244 Byte

BBox: 20.0,20.0 828.0,344.0 Skalierung: 0.35



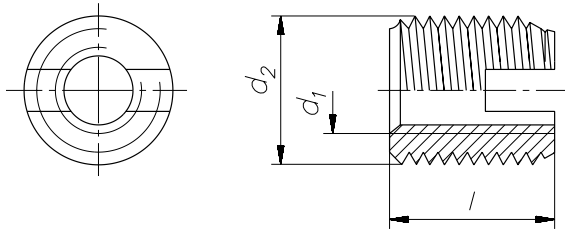
EI7504K.BEM 26284 Byte

BBox: 20.0,20.0 828.0,344.0 Skalierung: 0.35



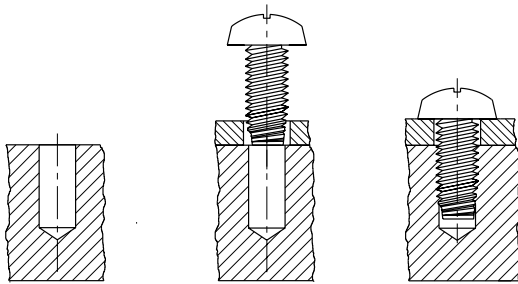
EI7405P.BEM 21871 Byte

BBox: 20.0,20.0 828.0,344.0 Skalierung: 0.35



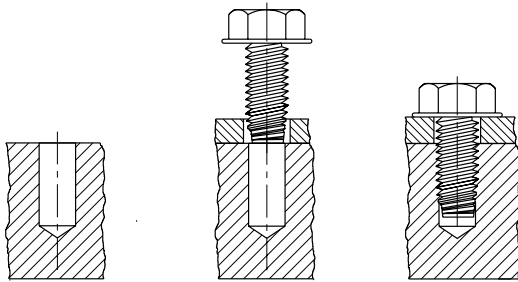
ENSAT302.BEM 42170 Byte

BBox: 20.0,20.0 828.0,344.0 Skalierung: 0.35



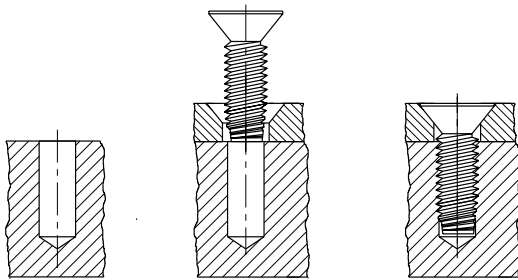
EITAP.BEM 39557 Byte

BBox: 20.0,20.0 828.0,344.0 Skalierung: 0.35



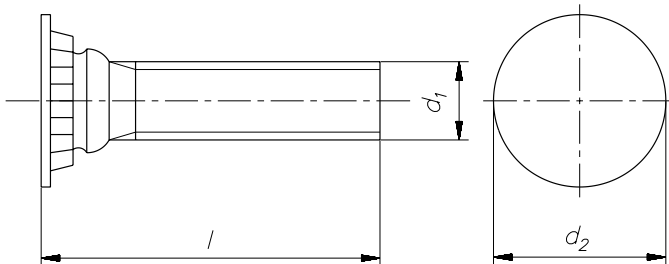
EITAK.BEM 41179 Byte

BBox: 20.0,20.0 828.0,344.0 Skalierung: 0.35



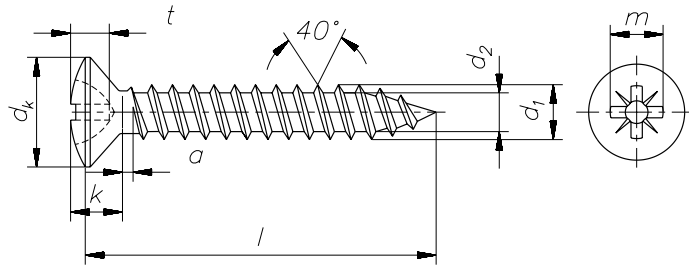
EITAC.BEM 41156 Byte

BBox: 20.0,20.0 828.0,344.0 Skalierung: 0.35



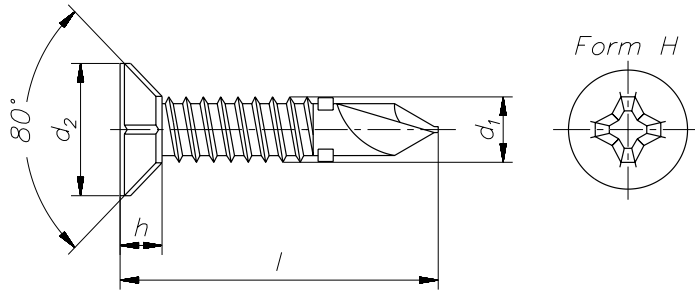
EINPR.BEM 42997 Byte

BBox: 20.0,20.0 828.0,344.0 Skalierung: 0.35



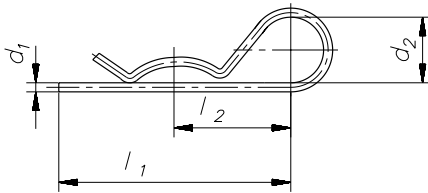
HECOLINS.BEM 135281 Byte

BBox: 20.0,20.0 828.0,344.0 Skalierung: 0.35



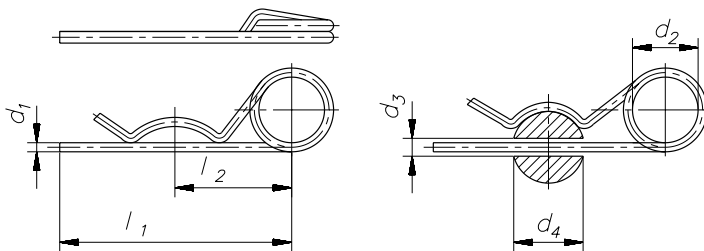
FLUTEK.BEM 85676 Byte

BBox: 20.0,20.0 828.0,344.0 Skalierung: 0.35



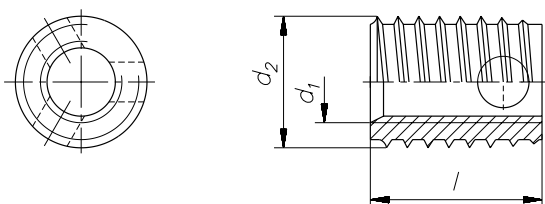
FEDERE.BEM 56187 Byte

BBox: 20.0,20.0 828.0,344.0 Skalierung: 0.35



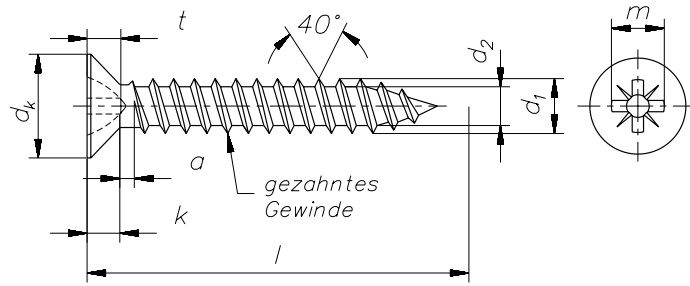
FEDERD.BEM 92232 Byte

BBox: 20.0,20.0 828.0,344.0 Skalierung: 0.35



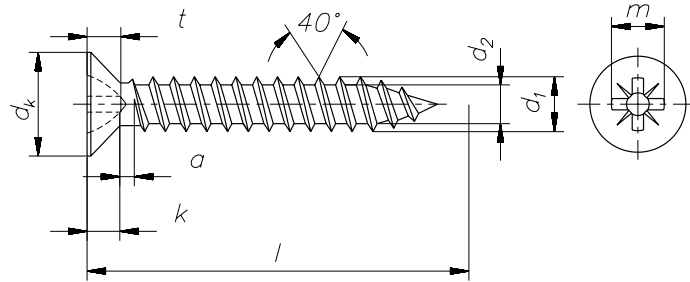
ENSAT307.BEM 43931 Byte

BBox: 20.0,20.0 828.0,344.0 Skalierung: 0.35



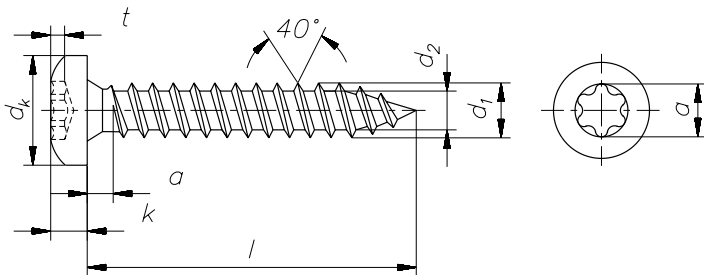
HECOSG.BEM 144023 Byte

BBox: 20.0,20.0 828.0,344.0 Skalierung: 0.35



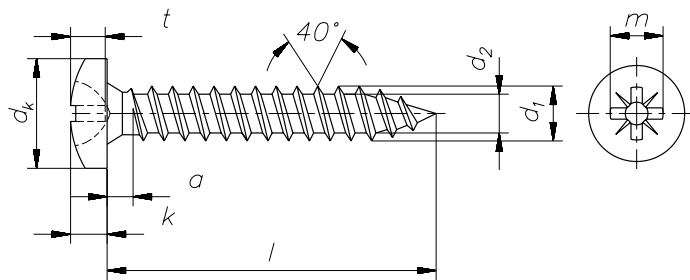
HECOSENK.BEM 135053 Byte

BBox: 20.0,20.0 828.0,344.0 Skalierung: 0.35



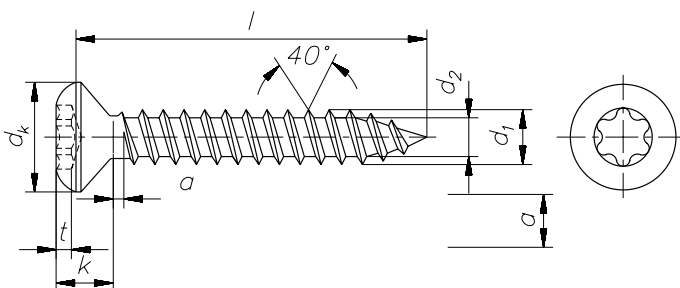
HECOPTO.BEM 138258 Byte

BBox: 20.0,20.0 828.0,344.0 Skalierung: 0.35



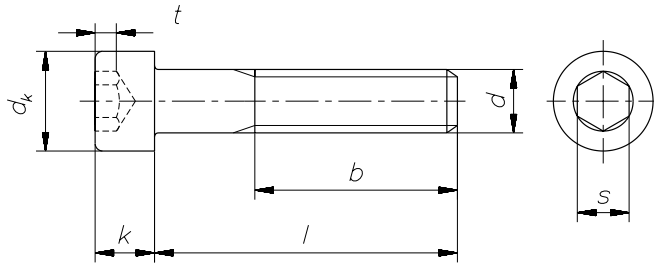
HECOPAN.BEM 134776 Byte

BBox: 20.0,20.0 828.0,344.0 Skalierung: 0.35



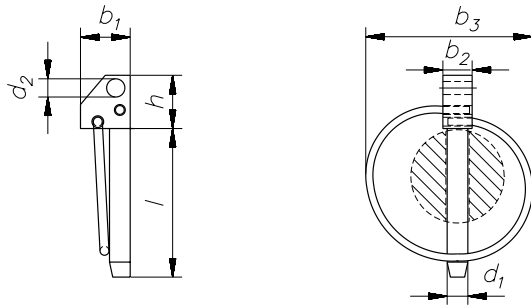
HECOLITO.BEM 139459 Byte

BBox: 20.0,20.0 828.0,344.0 Skalierung: 0.35



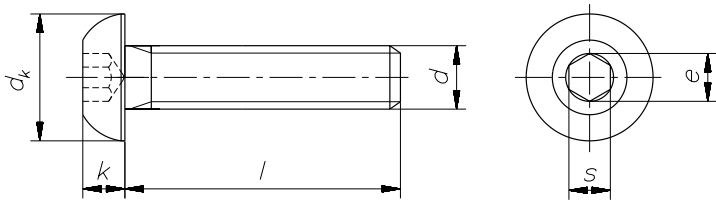
MFK109.BEM 92324 Byte

BBox: 20.0,20.0 828.0,344.0 Skalierung: 0.35



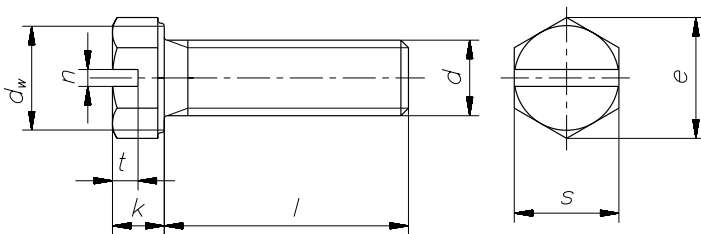
KLAP.BEM 99137 Byte

BBox: 20.0,20.0 828.0,344.0 Skalierung: 0.35



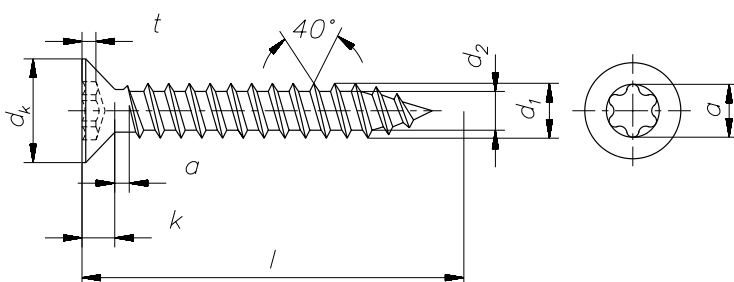
ISO7380.BEM 82383 Byte

BBox: 20.0,20.0 828.0,344.0 Skalierung: 0.35



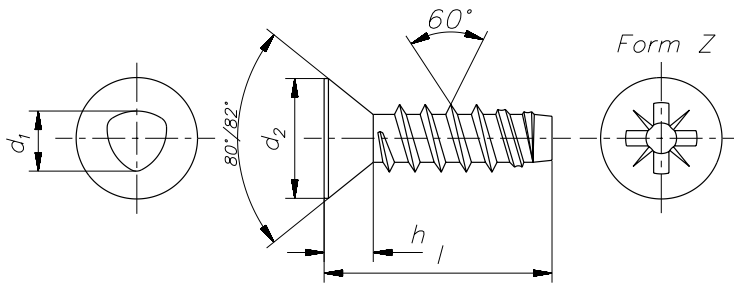
ISO4017.BEM 99977 Byte

BBox: 20.0,20.0 828.0,344.0 Skalierung: 0.35



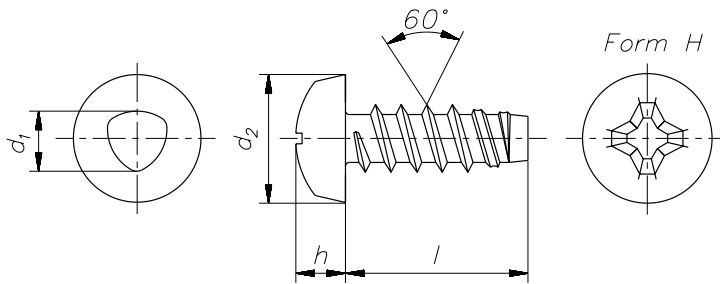
HECOSTOR.BEM 138045 Byte

BBox: 20.0,20.0 828.0,344.0 Skalierung: 0.35



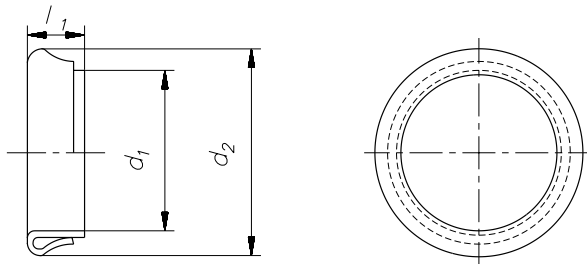
PLASTFZ8.BEM 110663 Byte

BBox: 20.0,20.0 828.0,344.0 Skalierung: 0.35



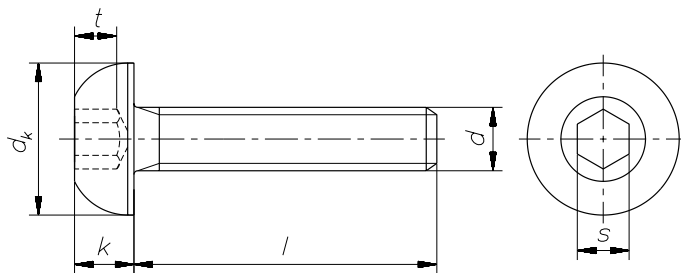
PLASTFH.BEM 81187 Byte

BBox: 20.0,20.0 828.0,344.0 Skalierung: 0.35



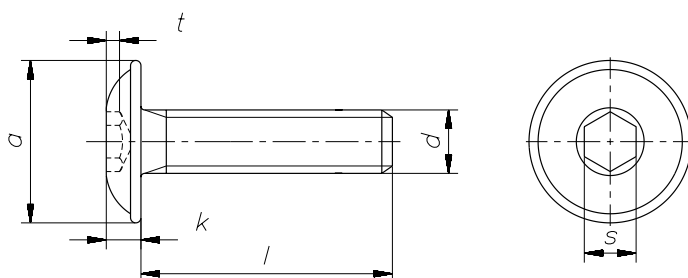
NYLTITE.BEM 51501 Byte

BBox: 20.0,20.0 828.0,344.0 Skalierung: 0.35



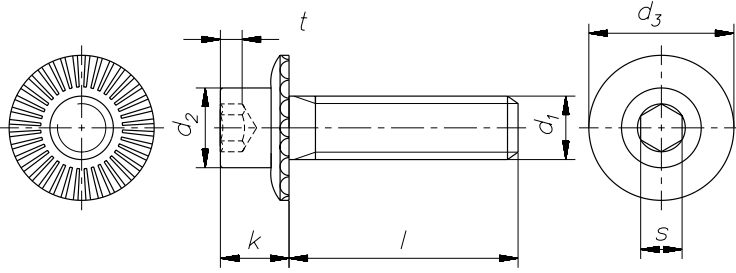
MLS109.BEM 79005 Byte

BBox: 20.0,20.0 828.0,344.0 Skalierung: 0.35



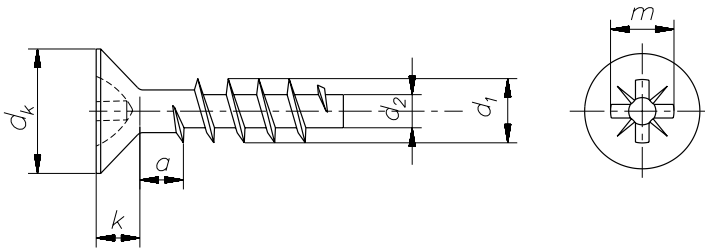
MLF109.BEM 81741 Byte

BBox: 20.0,20.0 828.0,344.0 Skalierung: 0.35



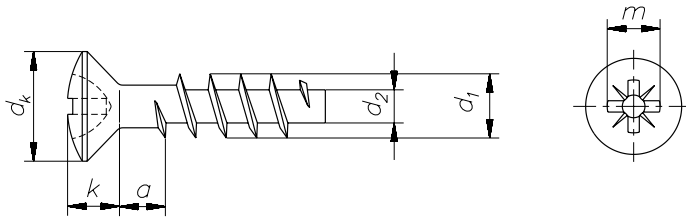
RIPP.BEM 106250 Byte

BBox: 20.0,20.0 828.0,344.0 Skalierung: 0.35



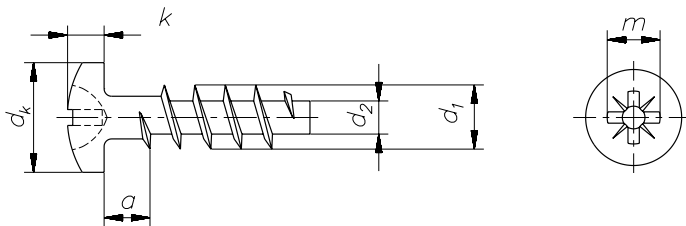
POLYSE.BEM 81859 Byte

BBox: 20.0,20.0 828.0,344.0 Skalierung: 0.35



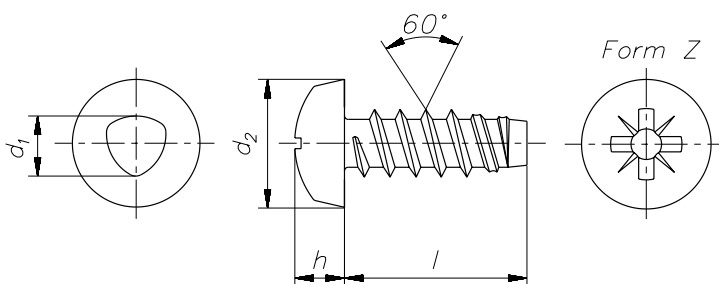
POLYLS.BEM 80766 Byte

BBox: 20.0,20.0 828.0,344.0 Skalierung: 0.35



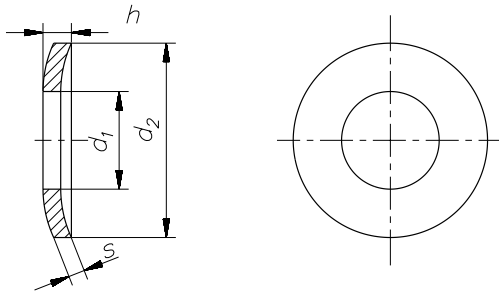
POLYLI.BEM 81075 Byte

BBox: 20.0,20.0 828.0,344.0 Skalierung: 0.35



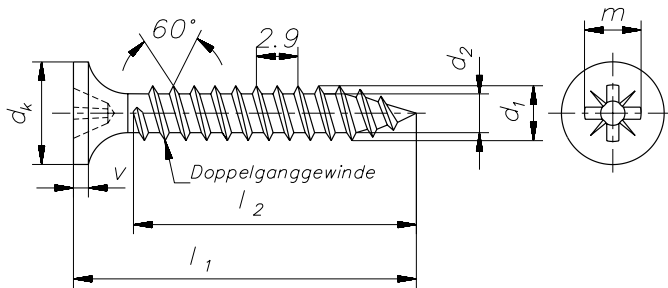
PLASTFZ.BEM 82074 Byte

BBox: 20.0,20.0 828.0,344.0 Skalierung: 0.35



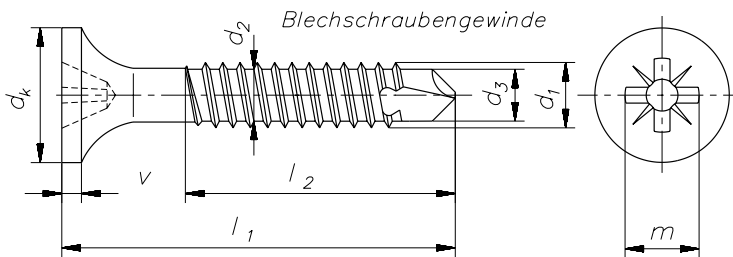
SCHHS.BEM 60216 Byte

BBox: 20.0,20.0 828.0,344.0 Skalierung: 0.35



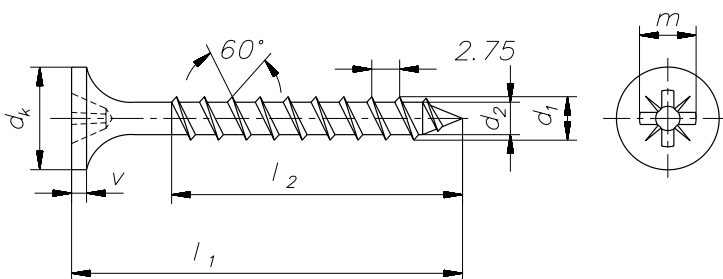
SBW.BEM 145571 Byte

BBox: 20.0,20.0 828.0,344.0 Skalierung: 0.35



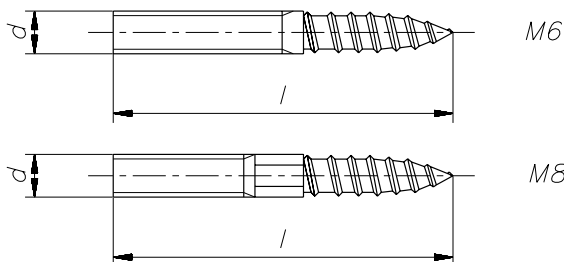
SBS.BEM 112115 Byte

BBox: 20.0,20.0 828.0,344.0 Skalierung: 0.35



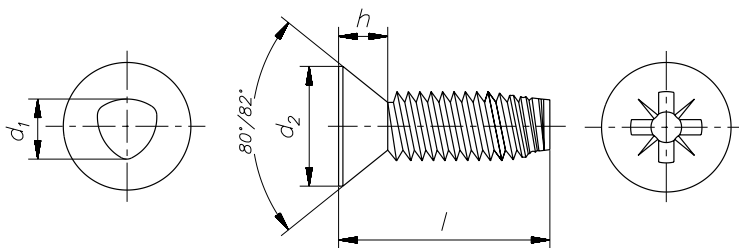
SBG.BEM 134955 Byte

BBox: 20.0,20.0 828.0,344.0 Skalierung: 0.35



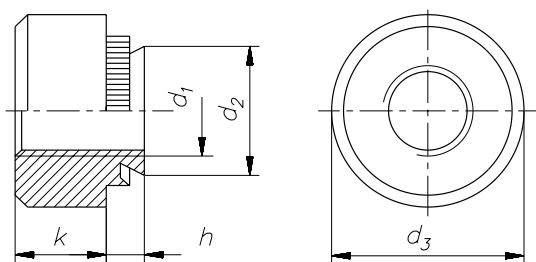
SANTECH.BEM 52912 Byte

BBox: 20.0,20.0 828.0,344.0 Skalierung: 0.35



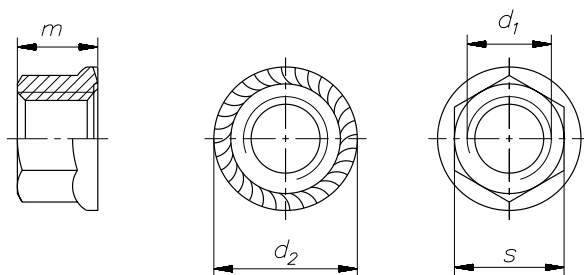
TAPC8.BEM 90109 Byte

BBox: 20.0,20.0 828.0,344.0 Skalierung: 0.35



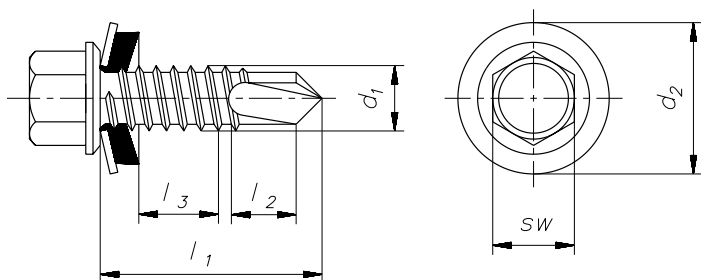
SWIFTPS.BEM 63392 Byte

BBox: 20.0,20.0 828.0,344.0 Skalierung: 0.35



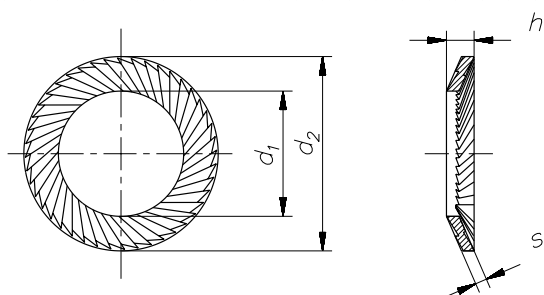
SPERRW.BEM 72874 Byte

BBox: 20.0,20.0 828.0,344.0 Skalierung: 0.35



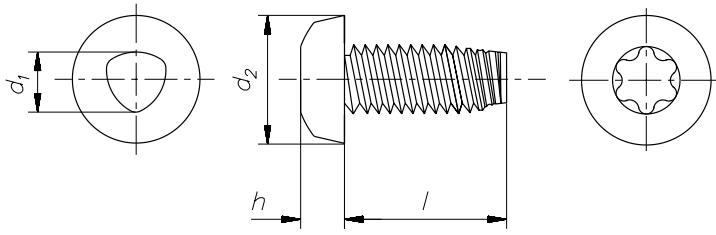
SD3.BEM 232885 Byte

BBox: 20.0,20.0 828.0,344.0 Skalierung: 0.35



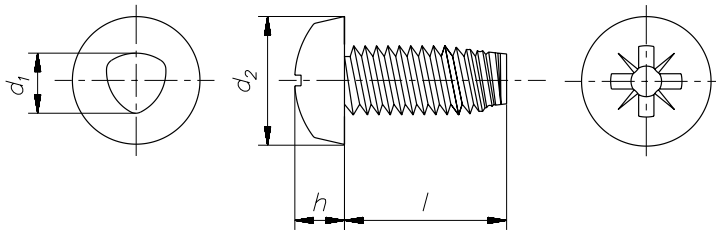
SCHNORRS.BEM 67289 Byte

BBox: 20.0,20.0 828.0,344.0 Skalierung: 0.35



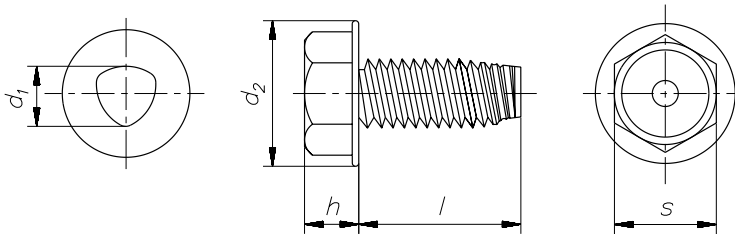
TAPT.BEM 63143 Byte

BBox: 20.0,20.0 828.0,344.0 Skalierung: 0.35



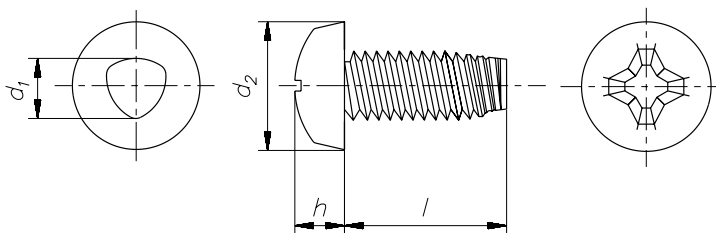
TAPP.BEM 60198 Byte

BBox: 20.0,20.0 828.0,344.0 Skalierung: 0.35



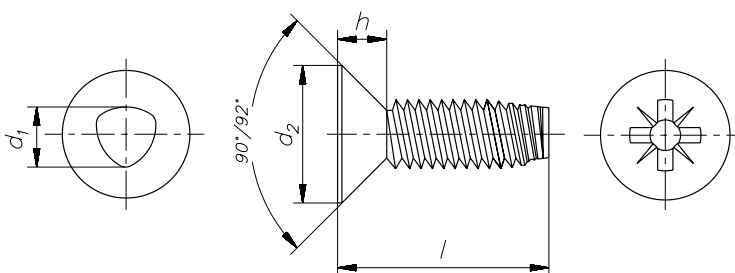
TAPK.BEM 77990 Byte

BBox: 20.0,20.0 828.0,344.0 Skalierung: 0.35



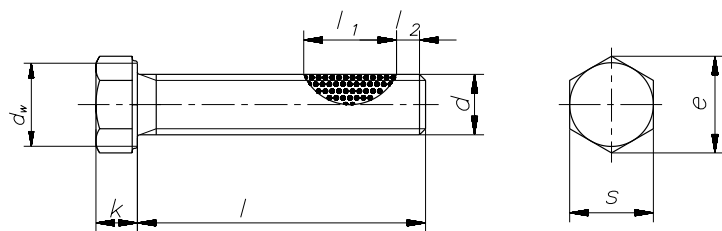
TAPH.BEM 59328 Byte

BBox: 20.0,20.0 828.0,344.0 Skalierung: 0.35



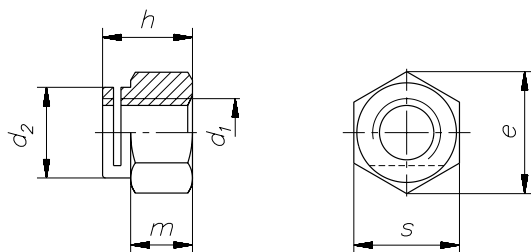
TAPC9.BEM 92668 Byte

BBox: 20.0,20.0 828.0,344.0 Skalierung: 0.35



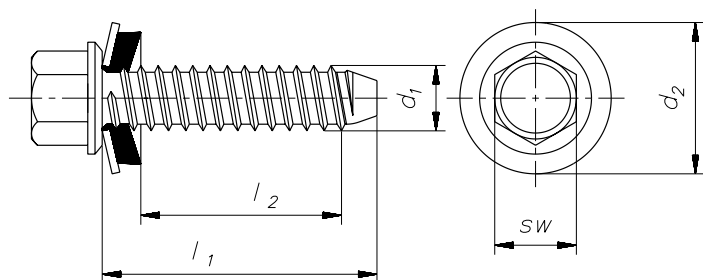
TUFLOK.BEM 1586489 Byte

BBox: 20.0,20.0 828.0,344.0 Skalierung: 0.35



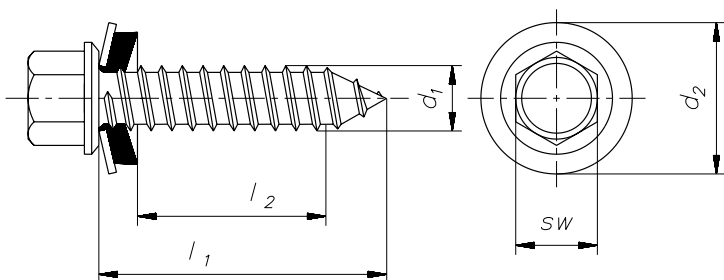
THERMAG.BEM 75437 Byte

BBox: 20.0,20.0 828.0,344.0 Skalierung: 0.35



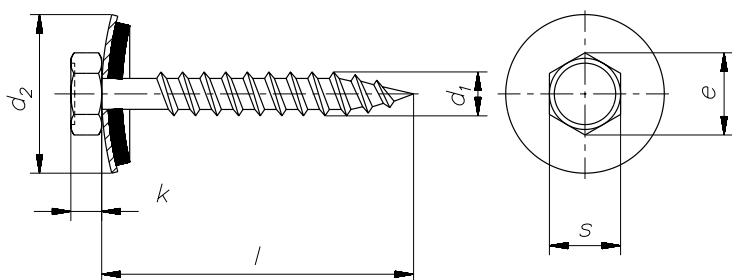
TDB-T.BEM 221469 Byte

BBox: 20.0,20.0 828.0,344.0 Skalierung: 0.35



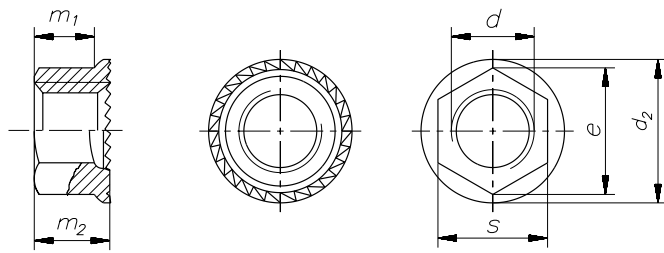
TDA-T.BEM 221155 Byte

BBox: 20.0,20.0 828.0,344.0 Skalierung: 0.35



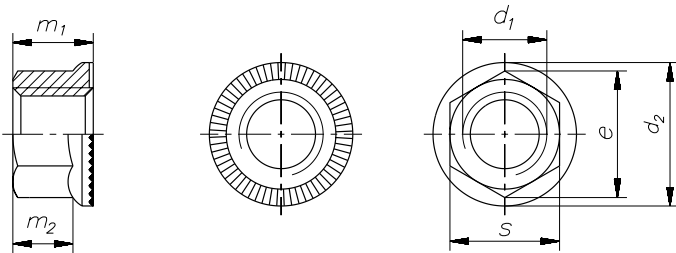
TDA.BEM 221920 Byte

BBox: 20.0,20.0 828.0,344.0 Skalierung: 0.35



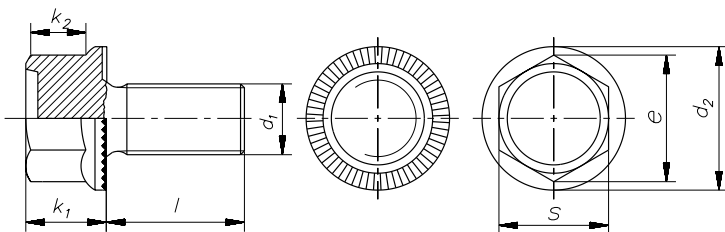
W196.BEM 92971 Byte

BBox: 20.0,20.0 828.0,344.0 Skalierung: 0.35



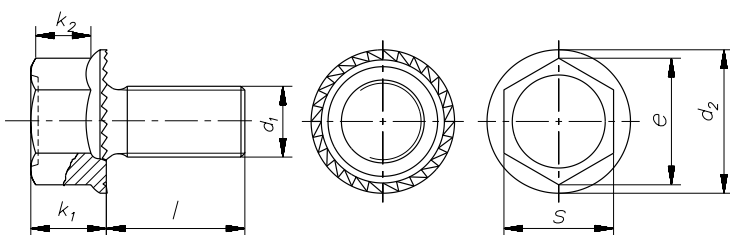
W193.BEM 125721 Byte

BBox: 20.0,20.0 828.0,344.0 Skalierung: 0.35



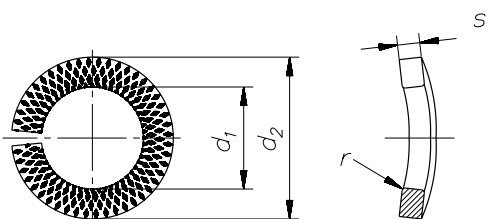
W158.BEM 136763 Byte

BBox: 20.0,20.0 828.0,344.0 Skalierung: 0.35



W151.BEM 104059 Byte

BBox: 20.0,20.0 828.0,344.0 Skalierung: 0.35



VSK.BEM 1385123 Byte

BBox: 20.0,20.0 828.0,344.0 Skalierung: 0.35